

Anti-EIF3F Antibody
Rabbit polyclonal antibody to EIF3F
Catalog # AP59749**Specification**

Anti-EIF3F Antibody - Product Information

Application	WB, IP
Primary Accession	O00303
Other Accession	Q9DCH4
Reactivity	Human, Mouse, Rat, Monkey
Host	Rabbit
Clonality	Polyclonal
Calculated MW	37564

Anti-EIF3F Antibody - Additional Information**Gene ID** 8665**Other Names**

EIF3S5; Eukaryotic translation initiation factor 3 subunit F; eIF3f; Deubiquitinating enzyme eIF3f; Eukaryotic translation initiation factor 3 subunit 5; eIF-3-epsilon; eIF3 p47

Target/Specificity

Recognizes endogenous levels of EIF3F protein.

DilutionWB~~WB (1/500 - 1/1000), IP (1/10 - 1/100)
IP~~N/A**Format**

Liquid in 0.42% Potassium phosphate, 0.87% Sodium chloride, pH 7.3, 30% glycerol, and 0.09% (W/V) sodium azide.

Storage

Store at -20 °C. Stable for 12 months from date of receipt

Anti-EIF3F Antibody - Protein Information**Name** EIF3F {ECO:0000255|HAMAP-Rule:MF_03005}**Function**

Component of the eukaryotic translation initiation factor 3 (eIF-3) complex, which is required for several steps in the initiation of protein synthesis (PubMed:17581632, PubMed:25849773, PubMed:27462815). The eIF-3 complex associates with the 40S ribosome and facilitates the recruitment of eIF-1, eIF-1A, eIF-2:GTP:methionyl- tRNAⁱ and eIF-5 to form the 43S pre-initiation complex (43S PIC). The eIF-3

complex stimulates mRNA recruitment to the 43S PIC and scanning of the mRNA for AUG recognition. The eIF-3 complex is also required for disassembly and recycling of post-termination ribosomal complexes and subsequently prevents premature joining of the 40S and 60S ribosomal subunits prior to initiation (PubMed:17581632). The eIF-3 complex specifically targets and initiates translation of a subset of mRNAs involved in cell proliferation, including cell cycling, differentiation and apoptosis, and uses different modes of RNA stem-loop binding to exert either translational activation or repression (PubMed:25849773).

Cellular Location

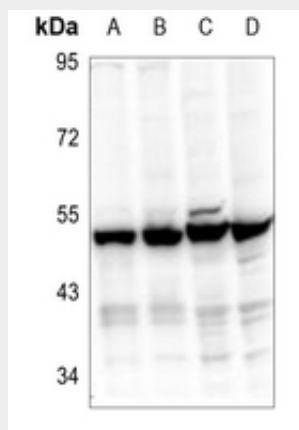
Cytoplasm {ECO:0000255|HAMAP-Rule:MF_03005}.

Anti-EIF3F Antibody - Protocols

Provided below are standard protocols that you may find useful for product applications.

- [Western Blot](#)
- [Blocking Peptides](#)
- [Dot Blot](#)
- [Immunohistochemistry](#)
- [Immunofluorescence](#)
- [Immunoprecipitation](#)
- [Flow Cytometry](#)
- [Cell Culture](#)

Anti-EIF3F Antibody - Images



Western blot analysis of EIF3F expression in HepG2 (A), MCF7 (B), AML12 (C), PC12 (D) whole cell lysates.

Anti-EIF3F Antibody - Background

KLH-conjugated synthetic peptide encompassing a sequence within the center region of human EIF3F. The exact sequence is proprietary.