

Anti-DR3 Antibody
Rabbit polyclonal antibody to DR3
Catalog # AP59753**Specification**

Anti-DR3 Antibody - Product Information

Application	WB
Primary Accession	O93038
Reactivity	Human
Host	Rabbit
Clonality	Polyclonal
Calculated MW	45385

Anti-DR3 Antibody - Additional Information**Gene ID** 8718**Other Names**

APO3; DDR3; DR3; TNFRSF12; WSL; WSL1; Tumor necrosis factor receptor superfamily member 25; Apo-3; Apoptosis-inducing receptor AIR; Apoptosis-mediating receptor DR3; Apoptosis-mediating receptor TRAMP; Death receptor 3; Lymphocyte-associated receptor of death; LARD; Protein WSL; Protein WSL-1

Target/Specificity

KLH-conjugated synthetic peptide encompassing a sequence within the center region of human DR3. The exact sequence is proprietary.

Dilution

WB~~WB (1/500 - 1/1000)

Format

Liquid in 0.42% Potassium phosphate, 0.87% Sodium chloride, pH 7.3, 30% glycerol, and 0.09% (W/V) sodium azide.

Storage

Store at -20 °C. Stable for 12 months from date of receipt

Anti-DR3 Antibody - Protein Information**Name** TNFRSF25**Synonyms** APO3, DDR3, DR3, TNFRSF12, WSL, WSL1**Function**

Receptor for TNFSF12/APO3L/TWEAK. Interacts directly with the adapter TRADD. Mediates activation of NF-kappa-B and induces apoptosis. May play a role in regulating lymphocyte homeostasis.

Cellular Location

[Isoform 1]: Cell membrane; Single-pass type I membrane protein [Isoform 9]: Cell membrane; Single-pass type I membrane protein [Isoform 3]: Secreted. [Isoform 5]: Secreted. [Isoform 7]: Secreted. [Isoform 10]: Secreted.

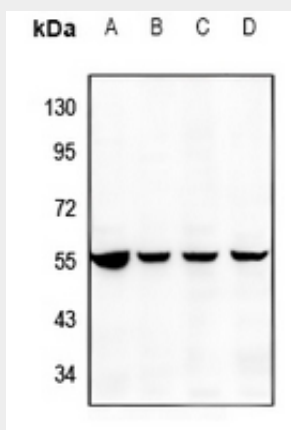
Tissue Location

Abundantly expressed in thymocytes and lymphocytes. Detected in lymphocyte-rich tissues such as thymus, colon, intestine, and spleen. Also found in the prostate

Anti-DR3 Antibody - Protocols

Provided below are standard protocols that you may find useful for product applications.

- [Western Blot](#)
- [Blocking Peptides](#)
- [Dot Blot](#)
- [Immunohistochemistry](#)
- [Immunofluorescence](#)
- [Immunoprecipitation](#)
- [Flow Cytometry](#)
- [Cell Culture](#)

Anti-DR3 Antibody - Images

Western blot analysis of DR3 expression in HEK293T (A), HCT116 (B), PC3 (C), U87MG (D) whole cell lysates.

Anti-DR3 Antibody - Background

KLH-conjugated synthetic peptide encompassing a sequence within the center region of human DR3. The exact sequence is proprietary.