

Anti-CES2 Antibody
Rabbit polyclonal antibody to CES2
Catalog # AP59757**Specification**

Anti-CES2 Antibody - Product Information

Application	WB, IHC
Primary Accession	O00748
Reactivity	Human, Mouse, Rat
Host	Rabbit
Clonality	Polyclonal
Calculated MW	61807

Anti-CES2 Antibody - Additional Information**Gene ID** 8824**Other Names**

ICE; Cocaine esterase; Carboxylesterase 2; CE-2; hCE-2; Methylumbelliferyl-acetate deacetylase 2

Target/Specificity

KLH-conjugated synthetic peptide encompassing a sequence within the center region of human CES2. The exact sequence is proprietary.

Dilution

WB~~WB (1/500 - 1/1000), IH (1/100 - 1/200)

IHC~~1:100~500

Format

Liquid in 0.42% Potassium phosphate, 0.87% Sodium chloride, pH 7.3, 30% glycerol, and 0.09% (W/V) sodium azide.

Storage

Store at -20 °C. Stable for 12 months from date of receipt

Anti-CES2 Antibody - Protein Information**Name** CES2 ([HGNC:1864](#))**Synonyms** ICE**Function**

Involved in the detoxification of xenobiotics and in the activation of ester and amide prodrugs (PubMed:9169443). Shows high catalytic efficiency for hydrolysis of cocaine, 4-methylumbelliferyl acetate, heroin and 6-monoacetylmorphine (PubMed:9169443). Hydrolyzes aspirin, substrates with large alcohol group and small acyl group and endogenous lipids such as triacylglycerol (PubMed:28677105). Converts monoacylglycerides to free fatty acids and glycerol. Hydrolyzes of 2- arachidonoylglycerol and prostaglandins (PubMed:21049984).

Cellular Location

Endoplasmic reticulum lumen

Tissue Location

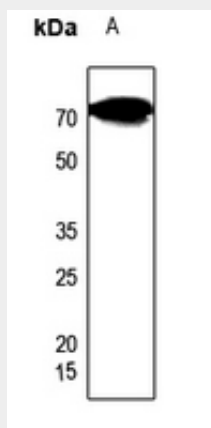
Preferentially expressed in intestine with moderate expression in liver. Within the intestine, highest expression is found in small intestine with lower expression in colon and rectum

Anti-CES2 Antibody - Protocols

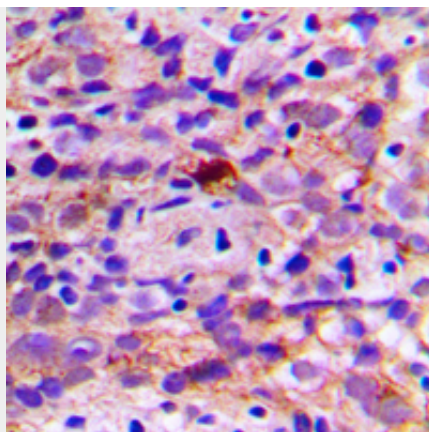
Provided below are standard protocols that you may find useful for product applications.

- [Western Blot](#)
- [Blocking Peptides](#)
- [Dot Blot](#)
- [Immunohistochemistry](#)
- [Immunofluorescence](#)
- [Immunoprecipitation](#)
- [Flow Cytometry](#)
- [Cell Culture](#)

Anti-CES2 Antibody - Images



Western blot analysis of CES2 expression in rat kidney (A) whole cell lysates.



Immunohistochemical analysis of CES2 staining in human breast cancer formalin fixed paraffin embedded tissue section. The section was pre-treated using heat mediated antigen retrieval with sodium citrate buffer (pH 6.0). The section was then incubated with the antibody at room temperature and detected using an HRP conjugated compact polymer system. DAB was used as the chromogen. The section was then counterstained with haematoxylin and mounted with DPX.

Anti-CES2 Antibody - Background

KLH-conjugated synthetic peptide encompassing a sequence within the center region of human CES2. The exact sequence is proprietary.