

Anti-PIAS2 Antibody
Rabbit polyclonal antibody to PIAS2
Catalog # AP59765**Specification**

Anti-PIAS2 Antibody - Product Information

Application	WB
Primary Accession	O75928
Other Accession	Q8C5D8
Reactivity	Human, Mouse, Rat, Chicken, Bovine, Dog
Host	Rabbit
Clonality	Polyclonal
Calculated MW	68240

Anti-PIAS2 Antibody - Additional Information**Gene ID** 9063**Other Names**

PIASX; E3 SUMO-protein ligase PIAS2; Androgen receptor-interacting protein 3; ARIP3; DAB2-interacting protein; DIP; Msx-interacting zinc finger protein; Miz1; PIAS-NY protein; Protein inhibitor of activated STAT x; Protein inhibitor of activated STAT2

Target/Specificity

KLH-conjugated synthetic peptide encompassing a sequence within the N-term region of human PIAS2. The exact sequence is proprietary.

Dilution

WB~~WB (1/500 - 1/1000)

Format

Liquid in 0.42% Potassium phosphate, 0.87% Sodium chloride, pH 7.3, 30% glycerol, and 0.09% (W/V) sodium azide.

Storage

Store at -20 °C. Stable for 12 months from date of receipt

Anti-PIAS2 Antibody - Protein Information**Name** PIAS2**Synonyms** PIASX**Function**

Functions as an E3-type small ubiquitin-like modifier (SUMO) ligase, stabilizing the interaction between UBE2I and the substrate, and as a SUMO-tethering factor. Plays a crucial role as a transcriptional coregulator in various cellular pathways, including the STAT pathway, the p53 pathway and the steroid hormone signaling pathway. The effects of this transcriptional

coregulation, transactivation or silencing may vary depending upon the biological context and the PIAS2 isoform studied. However, it seems to be mostly involved in gene silencing. Binds to sumoylated ELK1 and enhances its transcriptional activity by preventing recruitment of HDAC2 by ELK1, thus reversing SUMO-mediated repression of ELK1 transactivation activity. Isoform PIAS2-beta, but not isoform PIAS2-alpha, promotes MDM2 sumoylation. Isoform PIAS2-alpha promotes PARK7 sumoylation. Isoform PIAS2-beta promotes NCOA2 sumoylation more efficiently than isoform PIAS2-alpha. Isoform PIAS2-alpha sumoylates PML at 'Lys-65' and 'Lys-160'.

Cellular Location

Nucleus speckle {ECO:0000250|UniProtKB:Q8C5D8}. Nucleus, PML body. Nucleus. Note=Colocalizes at least partially with promyelocytic leukemia nuclear bodies (PML NBs) (PubMed:22406621) Colocalizes with SUMO1 in nuclear granules (By similarity) {ECO:0000250|UniProtKB:Q8C5D8, ECO:0000269|PubMed:22406621}

Tissue Location

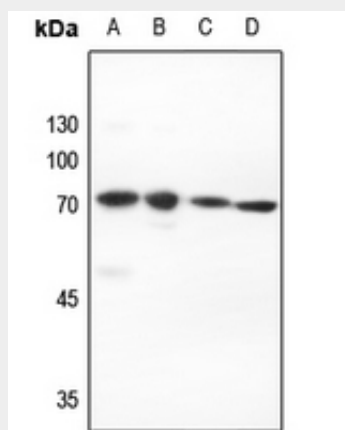
Mainly expressed in testis. Isoform 3 is expressed predominantly in adult testis, weakly in pancreas, embryonic testis and sperm, and at very low levels in other organs

Anti-PIAS2 Antibody - Protocols

Provided below are standard protocols that you may find useful for product applications.

- [Western Blot](#)
- [Blocking Peptides](#)
- [Dot Blot](#)
- [Immunohistochemistry](#)
- [Immunofluorescence](#)
- [Immunoprecipitation](#)
- [Flow Cytometry](#)
- [Cell Culture](#)

Anti-PIAS2 Antibody - Images



Western blot analysis of PIAS2 expression in Hela (A), H446 (B), mouse testis (C), rat lung (D) whole cell lysates.

Anti-PIAS2 Antibody - Background

KLH-conjugated synthetic peptide encompassing a sequence within the N-term region of human PIAS2. The exact sequence is proprietary.