

Anti-KCNAB3 Antibody
Rabbit polyclonal antibody to KCNAB3
Catalog # AP59772**Specification**

Anti-KCNAB3 Antibody - Product Information

Application	WB, IH
Primary Accession	O43448
Reactivity	Human, Mouse, Rat
Host	Rabbit
Clonality	Polyclonal
Calculated MW	43670

Anti-KCNAB3 Antibody - Additional Information**Gene ID** 9196**Other Names**

KCNA3B; Voltage-gated potassium channel subunit beta-3; K(+) channel subunit beta-3; Kv-beta-3

Target/Specificity

Recognizes endogenous levels of KCNAB3 protein.

Dilution

WB~~WB (1/500 - 1/1000), IH (1/100 - 1/200)

IH~~WB (1/500 - 1/1000), IH (1/100 - 1/200)

Format

Liquid in 0.42% Potassium phosphate, 0.87% Sodium chloride, pH 7.3, 30% glycerol, and 0.09% (W/V) sodium azide.

Storage

Store at -20 °C. Stable for 12 months from date of receipt

Anti-KCNAB3 Antibody - Protein Information**Name** KCNAB3**Synonyms** KCNA3B**Function**

Accessory potassium channel protein which modulates the activity of the pore-forming alpha subunit. Alters the functional properties of Kv1.5.

Cellular Location

Cytoplasm.

Tissue Location

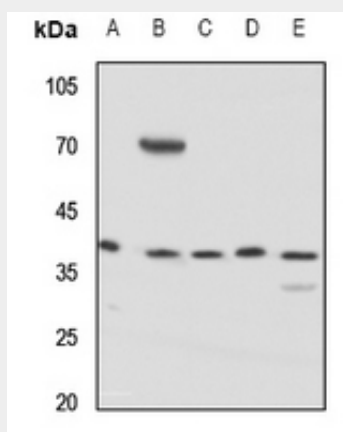
Brain specific. Most prominent expression in cerebellum. Weaker signals detected in cortex, occipital lobe, frontal lobe and temporal lobe. Not detected in spinal cord, heart, lung, liver, kidney, pancreas, placenta and skeletal muscle

Anti-KCNAB3 Antibody - Protocols

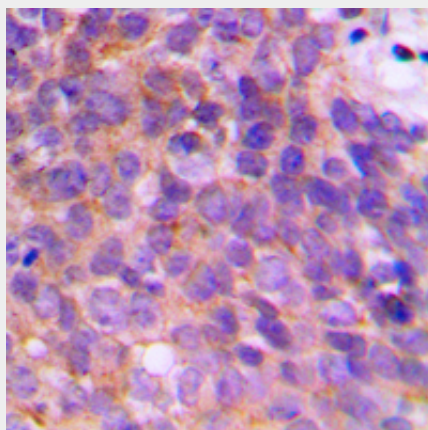
Provided below are standard protocols that you may find useful for product applications.

- [Western Blot](#)
- [Blocking Peptides](#)
- [Dot Blot](#)
- [Immunohistochemistry](#)
- [Immunofluorescence](#)
- [Immunoprecipitation](#)
- [Flow Cytometry](#)
- [Cell Culture](#)

Anti-KCNAB3 Antibody - Images



Western blot analysis of KCNAB3 expression in HEK293T (A), Hela (B), mouse kidney (C), mouse brain (D), rat kidney (E) whole cell lysates.



Immunohistochemical analysis of KCNAB3 staining in human breast cancer formalin fixed paraffin embedded tissue section. The section was pre-treated using heat mediated antigen retrieval with sodium citrate buffer (pH 6.0). The section was then incubated with the antibody at room temperature and detected using an HRP conjugated compact polymer system. DAB was used as

the chromogen. The section was then counterstained with haematoxylin and mounted with DPX.

Anti-KCNAB3 Antibody - Background

KLH-conjugated synthetic peptide encompassing a sequence within the C-term region of human KCNAB3. The exact sequence is proprietary.