

Anti-IL-32 Antibody
Rabbit polyclonal antibody to IL-32
Catalog # AP59774**Specification**

Anti-IL-32 Antibody - Product Information

Application	WB, IHC
Primary Accession	P24001
Reactivity	Human, Mouse, Rat
Host	Rabbit
Clonality	Polyclonal
Calculated MW	26676

Anti-IL-32 Antibody - Additional Information**Gene ID** 9235**Other Names**

NK4; TAIF; Interleukin-32; IL-32; Natural killer cells protein 4; Tumor necrosis factor alpha-inducing factor

Target/Specificity

Recognizes endogenous levels of IL-32 protein.

Dilution

WB~~WB (1/500 - 1/1000), IH (1/100 - 1/200)

IHC~~1:100~500

Format

Liquid in 0.42% Potassium phosphate, 0.87% Sodium chloride, pH 7.3, 30% glycerol, and 0.09% (W/V) sodium azide.

Storage

Store at -20 °C. Stable for 12 months from date of receipt

Anti-IL-32 Antibody - Protein Information**Name** IL32**Synonyms** NK4, TAIF**Function**

Cytokine that may play a role in innate and adaptive immune responses. It induces various cytokines such as TNFA/TNF-alpha and IL8. It activates typical cytokine signal pathways of NF-kappa-B and p38 MAPK.

Cellular Location

Secreted.

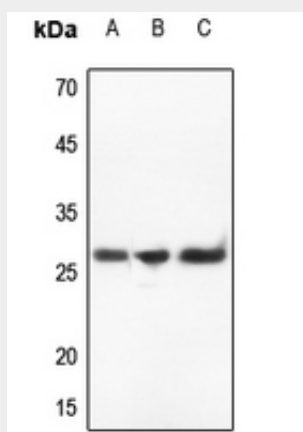
Tissue Location

Selectively expressed in lymphocytes. Expression is more prominent in immune cells than in non-immune cells

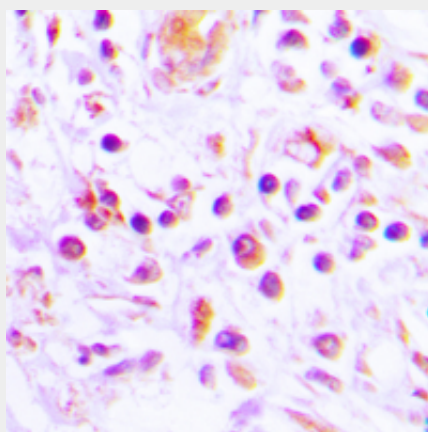
Anti-IL-32 Antibody - Protocols

Provided below are standard protocols that you may find useful for product applications.

- [Western Blot](#)
- [Blocking Peptides](#)
- [Dot Blot](#)
- [Immunohistochemistry](#)
- [Immunofluorescence](#)
- [Immunoprecipitation](#)
- [Flow Cytometry](#)
- [Cell Culture](#)

Anti-IL-32 Antibody - Images

Western blot analysis of IL-32 expression in mouse liver (A), rat liver (B), rat kidney (C) whole cell lysates.



Immunohistochemical analysis of IL-32 staining in human lung cancer formalin fixed paraffin embedded tissue section. The section was pre-treated using heat mediated antigen retrieval with sodium citrate buffer (pH 6.0). The section was then incubated with the antibody at room temperature and detected using an HRP conjugated compact polymer system. DAB was used as

the chromogen. The section was then counterstained with haematoxylin and mounted with DPX.

Anti-IL-32 Antibody - Background

KLH-conjugated synthetic peptide encompassing a sequence within the C-term region of human IL-32. The exact sequence is proprietary.