

**Anti-CRSP7 Antibody**  
**Rabbit polyclonal antibody to CRSP7**  
**Catalog # AP59778****Specification**

---

**Anti-CRSP7 Antibody - Product Information**

Application	WB
Primary Accession	<a href="#">O95402</a>
Reactivity	Human, Rat, Rabbit, Bovine, Dog
Host	Rabbit
Clonality	Polyclonal
Calculated MW	65446

**Anti-CRSP7 Antibody - Additional Information****Gene ID** 9441**Other Names**

ARC70; CRSP7; Mediator of RNA polymerase II transcription subunit 26; Activator-recruited cofactor 70 kDa component; ARC70; Cofactor required for Sp1 transcriptional activation subunit 7; CRSP complex subunit 7; Mediator complex subunit 26; Transcriptional coactivator CRSP70

**Target/Specificity**

Recognizes endogenous levels of CRSP7 protein.

**Dilution**

WB~~WB (1/500 - 1/1000)

**Format**

Liquid in 0.42% Potassium phosphate, 0.87% Sodium chloride, pH 7.3, 30% glycerol, and 0.09% (W/V) sodium azide.

**Storage**

Store at -20 °C. Stable for 12 months from date of receipt

**Anti-CRSP7 Antibody - Protein Information****Name** MED26**Synonyms** ARC70, CRSP7**Function**

Component of the Mediator complex, a coactivator involved in the regulated transcription of nearly all RNA polymerase II-dependent genes. Mediator functions as a bridge to convey information from gene-specific regulatory proteins to the basal RNA polymerase II transcription machinery. Mediator is recruited to promoters by direct interactions with regulatory proteins and serves as a scaffold for the assembly of a functional pre-initiation complex with RNA polymerase II and the general transcription factors.

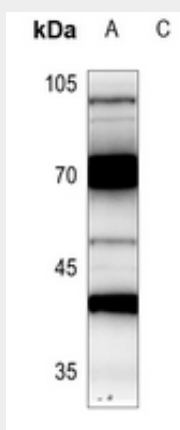
**Cellular Location**

Nucleus.

**Anti-CRSP7 Antibody - Protocols**

Provided below are standard protocols that you may find useful for product applications.

- [Western Blot](#)
- [Blocking Peptides](#)
- [Dot Blot](#)
- [Immunohistochemistry](#)
- [Immunofluorescence](#)
- [Immunoprecipitation](#)
- [Flow Cytometry](#)
- [Cell Culture](#)

**Anti-CRSP7 Antibody - Images**

Western blot analysis of CRSP7 expression in rat brain (A) whole cell lysates.

**Anti-CRSP7 Antibody - Background**

KLH-conjugated synthetic peptide encompassing a sequence within the N-term region of human CRSP7. The exact sequence is proprietary.