

**Anti-Synphilin 1 Antibody**  
**Rabbit polyclonal antibody to Synphilin 1**  
**Catalog # AP59780****Specification**

---

**Anti-Synphilin 1 Antibody - Product Information**

Application	WB, IHC
Primary Accession	<a href="#">O9Y6H5</a>
Reactivity	Human, Mouse, Rat
Host	Rabbit
Clonality	Polyclonal
Calculated MW	100409

**Anti-Synphilin 1 Antibody - Additional Information****Gene ID** 9627**Other Names**

Synphilin-1; Sph1; Alpha-synuclein-interacting protein

**Target/Specificity**

Recognizes endogenous levels of Synphilin 1 protein.

**Dilution**

WB~~WB (1/500 - 1/1000), IH (1/100 - 1/200)

IHC~~1:100~500

**Format**

Liquid in 0.42% Potassium phosphate, 0.87% Sodium chloride, pH 7.3, 30% glycerol, and 0.09% (W/V) sodium azide.

**Storage**

Store at -20 °C. Stable for 12 months from date of receipt

**Anti-Synphilin 1 Antibody - Protein Information****Name** SNCAIP**Function**

Isoform 2 inhibits the ubiquitin ligase activity of SIAH1 and inhibits proteasomal degradation of target proteins. Isoform 2 inhibits autoubiquitination and proteasomal degradation of SIAH1, and thereby increases cellular levels of SIAH. Isoform 2 modulates SNCA monoubiquitination by SIAH1.

**Cellular Location**

Cytoplasm. Note=Detected in cytoplasmic inclusion bodies, together with SNCA

**Tissue Location**

Detected in brain (at protein level). Widely expressed, with highest levels in brain, heart and

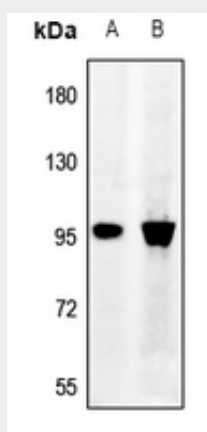
placenta

### Anti-Synphilin 1 Antibody - Protocols

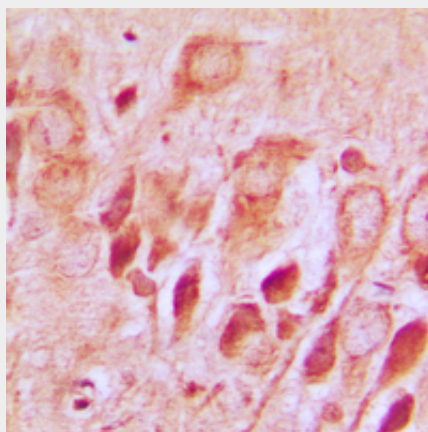
Provided below are standard protocols that you may find useful for product applications.

- [Western Blot](#)
- [Blocking Peptides](#)
- [Dot Blot](#)
- [Immunohistochemistry](#)
- [Immunofluorescence](#)
- [Immunoprecipitation](#)
- [Flow Cytometry](#)
- [Cell Culture](#)

### Anti-Synphilin 1 Antibody - Images



Western blot analysis of Synphilin 1 expression in PMVEC (A), BV2 (B) whole cell lysates.



Immunohistochemical analysis of Synphilin 1 staining in human brain formalin fixed paraffin embedded tissue section. The section was pre-treated using heat mediated antigen retrieval with sodium citrate buffer (pH 6.0). The section was then incubated with the antibody at room temperature and detected using an HRP conjugated compact polymer system. DAB was used as the chromogen. The section was then counterstained with haematoxylin and mounted with DPX.

### Anti-Synphilin 1 Antibody - Background

KLH-conjugated synthetic peptide encompassing a sequence within the C-term region of human Synphilin 1. The exact sequence is proprietary.