

Anti-Nephrocystin 5 Antibody
Rabbit polyclonal antibody to Nephrocystin 5
Catalog # AP59782**Specification**

Anti-Nephrocystin 5 Antibody - Product Information

Application	WB, IH
Primary Accession	Q15051
Reactivity	Human, Mouse, Rat
Host	Rabbit
Clonality	Polyclonal
Calculated MW	68929

Anti-Nephrocystin 5 Antibody - Additional Information**Gene ID** 9657**Other Names**

KIAA0036; NPHP5; IQ calmodulin-binding motif-containing protein 1; Nephrocystin-5; p53 and DNA damage-regulated IQ motif protein; PIQ

Target/Specificity

Recognizes endogenous levels of Nephrocystin 5 protein.

Dilution

WB~~WB (1/500 - 1/1000), IH (1/100 - 1/200)

IH~~WB (1/500 - 1/1000), IH (1/100 - 1/200)

Format

Liquid in 0.42% Potassium phosphate, 0.87% Sodium chloride, pH 7.3, 30% glycerol, and 0.09% (W/V) sodium azide.

Storage

Store at -20 °C. Stable for 12 months from date of receipt

Anti-Nephrocystin 5 Antibody - Protein Information**Name** IQCB1**Synonyms** KIAA0036, NPHP5**Function**

Involved in ciliogenesis. The function in an early step in cilia formation depends on its association with CEP290/NPHP6 (PubMed: 21565611, PubMed: 23446637). Involved in regulation of the BBSome complex integrity, specifically for presence of BBS2 and BBS5 in the complex, and in ciliary targeting of selected BBSome cargos. May play a role in controlling entry of the BBSome complex to cilia possibly

implicating CEP290/NPHP6 (PubMed:25552655).

Cellular Location

Cytoplasm, cytoskeleton, microtubule organizing center, centrosome. Cytoplasm, cytoskeleton, microtubule organizing center, centrosome, centriole. Note=Localization to the centrosome depends on the interaction with CEP290/NPHP6

Tissue Location

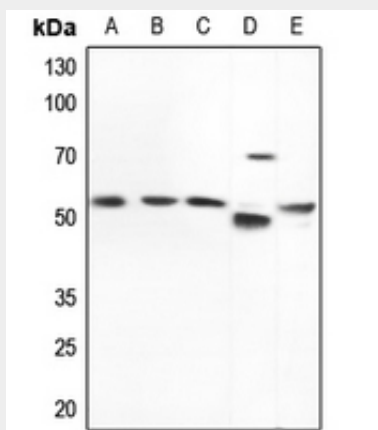
Ubiquitously expressed in fetal and adult tissues. Localized to the outer segments and connecting cilia of photoreceptor cells. Up-regulated in a number of primary colorectal and gastric tumors.

Anti-Nephrocystin 5 Antibody - Protocols

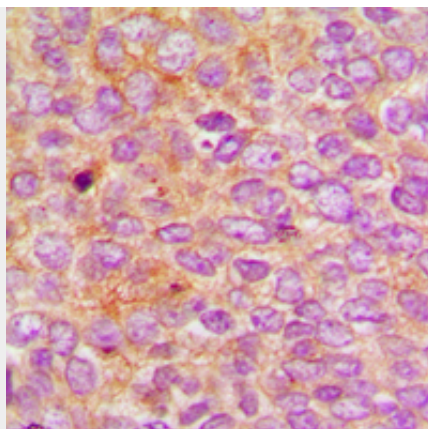
Provided below are standard protocols that you may find useful for product applications.

- [Western Blot](#)
- [Blocking Peptides](#)
- [Dot Blot](#)
- [Immunohistochemistry](#)
- [Immunofluorescence](#)
- [Immunoprecipitation](#)
- [Flow Cytometry](#)
- [Cell Culture](#)

Anti-Nephrocystin 5 Antibody - Images



Western blot analysis of Nephrocystin 5 expression in HEK293T (A), HeLa (B), HGC27 (C), mouse testis (D), rat lung (E) whole cell lysates.



Immunohistochemical analysis of Nephrocystin 5 staining in human breast cancer formalin fixed paraffin embedded tissue section. The section was pre-treated using heat mediated antigen retrieval with sodium citrate buffer (pH 6.0). The section was then incubated with the antibody at room temperature and detected using an HRP conjugated compact polymer system. DAB was used as the chromogen. The section was then counterstained with haematoxylin and mounted with DPX.

Anti-Nephrocystin 5 Antibody - Background

KLH-conjugated synthetic peptide encompassing a sequence within the center region of human Nephrocystin 5. The exact sequence is proprietary.