

Anti-BIM Antibody
Rabbit polyclonal antibody to BIM
Catalog # AP59787**Specification**

Anti-BIM Antibody - Product Information

Application	WB, IHC
Primary Accession	O43521
Other Accession	O54918
Reactivity	Human, Mouse, Rat, Rabbit, Pig, Bovine, Dog
Host	Rabbit
Clonality	Polyclonal
Calculated MW	22171

Anti-BIM Antibody - Additional Information**Gene ID** 10018**Other Names**

BIM; Bcl-2-like protein 11; Bcl2-L-11; Bcl2-interacting mediator of cell death

Target/Specificity

KLH-conjugated synthetic peptide encompassing a sequence within the N-term region of human BIM. The exact sequence is proprietary.

Dilution

WB~~WB (1/500 - 1/1000), IH (1/100 - 1/200)

IHC~~1:100~500

Format

Liquid in 0.42% Potassium phosphate, 0.87% Sodium chloride, pH 7.3, 30% glycerol, and 0.09% (W/V) sodium azide.

Storage

Store at -20 °C. Stable for 12 months from date of receipt

Anti-BIM Antibody - Protein Information**Name** BCL2L11**Synonyms** BIM**Function**

Induces apoptosis and anoikis. Isoform BimL is more potent than isoform BimEL. Isoform Bim-alpha1, isoform Bim-alpha2 and isoform Bim-alpha3 induce apoptosis, although less potent than isoform BimEL, isoform BimL and isoform BimS. Isoform Bim-gamma induces apoptosis. Isoform Bim-alpha3 induces apoptosis possibly through a caspase- mediated pathway. Isoform

BimAC and isoform BimABC lack the ability to induce apoptosis.

Cellular Location

Endomembrane system; Peripheral membrane protein. Note=Associated with intracytoplasmic membranes. [Isoform BimL]: Mitochondrion. [Isoform Bim-alpha1]: Mitochondrion.

Tissue Location

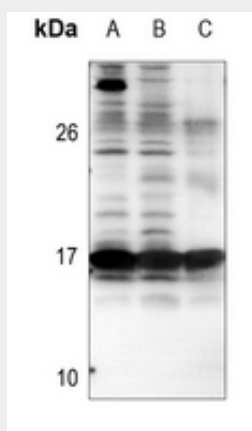
Isoform BimEL, isoform BimL and isoform BimS are the predominant isoforms and are widely expressed with tissue-specific variation. Isoform Bim-gamma is most abundantly expressed in small intestine and colon, and in lower levels in spleen, prostate, testis, heart, liver and kidney.

Anti-BIM Antibody - Protocols

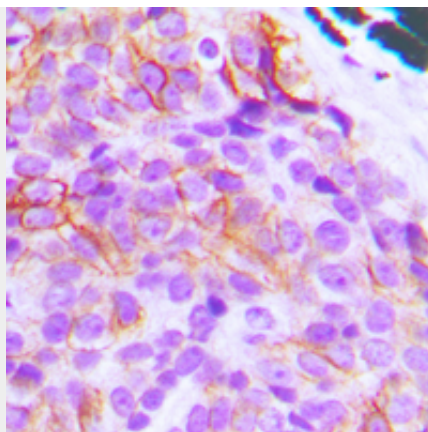
Provided below are standard protocols that you may find useful for product applications.

- [Western Blot](#)
- [Blocking Peptides](#)
- [Dot Blot](#)
- [Immunohistochemistry](#)
- [Immunofluorescence](#)
- [Immunoprecipitation](#)
- [Flow Cytometry](#)
- [Cell Culture](#)

Anti-BIM Antibody - Images



Western blot analysis of BIM expression in HCT116 (A), HEK293T (B), SHSY5Y (C) whole cell lysates.



Immunohistochemical analysis of BIM staining in human breast cancer formalin fixed paraffin embedded tissue section. The section was pre-treated using heat mediated antigen retrieval with sodium citrate buffer (pH 6.0). The section was then incubated with the antibody at room temperature and detected using an HRP conjugated compact polymer system. DAB was used as the chromogen. The section was then counterstained with haematoxylin and mounted with DPX.

Anti-BIM Antibody - Background

KLH-conjugated synthetic peptide encompassing a sequence within the N-term region of human BIM. The exact sequence is proprietary.