

**Anti-KCNMB2 Antibody**  
**Rabbit polyclonal antibody to KCNMB2**  
**Catalog # AP59792****Specification**

---

**Anti-KCNMB2 Antibody - Product Information**

Application	<b>WB, IP</b>
Primary Accession	<a href="#">O9Y691</a>
Other Accession	<a href="#">O9CZM9</a>
Reactivity	<b>Human, Mouse, Rat, Bovine</b>
Host	<b>Rabbit</b>
Clonality	<b>Polyclonal</b>
Calculated MW	<b>27130</b>

**Anti-KCNMB2 Antibody - Additional Information****Gene ID** 10242**Other Names**

Calcium-activated potassium channel subunit beta-2; BK channel subunit beta-2; BKbeta2; Hbeta2; Calcium-activated potassium channel, subfamily M subunit beta-2; Charybdotoxin receptor subunit beta-2; Hbeta3; K(VCA)beta-2; Maxi K channel subunit beta-2; Slo-beta-2

**Target/Specificity**

KLH-conjugated synthetic peptide encompassing a sequence within the center region of human KCNMB2. The exact sequence is proprietary.

**Dilution**

WB~~WB (1/500 - 1/1000), IP (1/10 - 1/100)  
IP~~N/A

**Format**

Liquid in 0.42% Potassium phosphate, 0.87% Sodium chloride, pH 7.3, 30% glycerol, and 0.09% (W/V) sodium azide.

**Storage**

Store at -20 °C. Stable for 12 months from date of receipt

**Anti-KCNMB2 Antibody - Protein Information****Name** KCNMB2**Function**

Regulatory subunit of the calcium activated potassium KCNMA1 (maxiK) channel. Modulates the calcium sensitivity and gating kinetics of KCNMA1, thereby contributing to KCNMA1 channel diversity. Acts as a negative regulator that confers rapid and complete inactivation of KCNMA1 channel complex. May participate in KCNMA1 inactivation in chromaffin cells of the adrenal gland or in hippocampal CA1 neurons.

**Cellular Location**

Membrane; Multi-pass membrane protein.

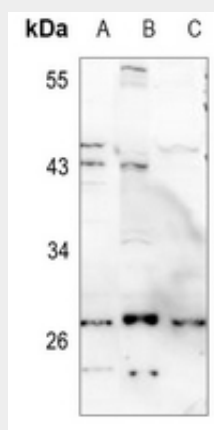
**Tissue Location**

Expressed in kidney, heart and brain. Highly expressed in ovary. Expressed at low level in other tissues

**Anti-KCNMB2 Antibody - Protocols**

Provided below are standard protocols that you may find useful for product applications.

- [Western Blot](#)
- [Blocking Peptides](#)
- [Dot Blot](#)
- [Immunohistochemistry](#)
- [Immunofluorescence](#)
- [Immunoprecipitation](#)
- [Flow Cytometry](#)
- [Cell Culture](#)

**Anti-KCNMB2 Antibody - Images**

Western blot analysis of KCNMB2 expression in U87MG (A), SP20 (B), H9C2 (C) whole cell lysates.

**Anti-KCNMB2 Antibody - Background**

KLH-conjugated synthetic peptide encompassing a sequence within the center region of human KCNMB2. The exact sequence is proprietary.