

Anti-CD172b Antibody
Rabbit polyclonal antibody to CD172b
Catalog # AP59795**Specification**

Anti-CD172b Antibody - Product Information

Application	WB, IP
Primary Accession	O00241
Reactivity	Human, Mouse, Bovine
Host	Rabbit
Clonality	Polyclonal
Calculated MW	43211

Anti-CD172b Antibody - Additional Information**Gene ID** 10326**Other Names**

Signal-regulatory protein beta-1; SIRP-beta-1; CD172 antigen-like family member B; CD172b

Target/Specificity

Recognizes endogenous levels of CD172b protein.

Dilution

WB~~WB (1/500 - 1/1000), IP (1/10 - 1/100)

IP~~N/A

Format

Liquid in 0.42% Potassium phosphate, 0.87% Sodium chloride, pH 7.3, 30% glycerol, and 0.09% (W/V) sodium azide.

Storage

Store at -20 °C. Stable for 12 months from date of receipt

Anti-CD172b Antibody - Protein Information**Name** SIRPB1**Function**

Immunoglobulin-like cell surface receptor involved in the negative regulation of receptor tyrosine kinase-coupled signaling processes. Also participates in the recruitment of tyrosine kinase SYK. Triggers activation of myeloid cells when associated with TYROBP (PubMed:10604985).

Cellular Location

Cell membrane; Single-pass type I membrane protein

Tissue Location

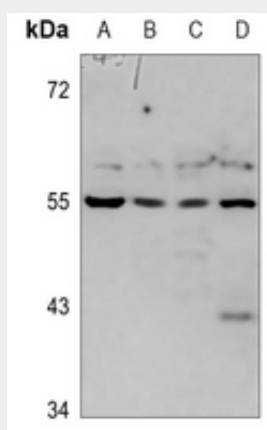
Detected in monocytes and dendritic cells.

Anti-CD172b Antibody - Protocols

Provided below are standard protocols that you may find useful for product applications.

- [Western Blot](#)
- [Blocking Peptides](#)
- [Dot Blot](#)
- [Immunohistochemistry](#)
- [Immunofluorescence](#)
- [Immunoprecipitation](#)
- [Flow Cytometry](#)
- [Cell Culture](#)

Anti-CD172b Antibody - Images



Western blot analysis of CD172b expression in HEK293T (A), H1688 (B), A549 (C), mouse muscle (D) whole cell lysates.

Anti-CD172b Antibody - Background

KLH-conjugated synthetic peptide encompassing a sequence within the center region of human CD172b. The exact sequence is proprietary.