

**Anti-SCML2 Antibody**  
**Rabbit polyclonal antibody to SCML2**  
**Catalog # AP59796****Specification**

---

**Anti-SCML2 Antibody - Product Information**

Application	WB
Primary Accession	<a href="#">O9UQRO</a>
Reactivity	Human
Host	Rabbit
Clonality	Polyclonal
Calculated MW	77257

**Anti-SCML2 Antibody - Additional Information****Gene ID** 10389**Other Names**

Sex comb on midleg-like protein 2

**Target/Specificity**

Recognizes endogenous levels of SCML2 protein.

**Dilution**

WB~~WB (1/500 - 1/1000)

**Format**

Liquid in 0.42% Potassium phosphate, 0.87% Sodium chloride, pH 7.3, 30% glycerol, and 0.09% (W/V) sodium azide.

**Storage**

Store at -20 °C. Stable for 12 months from date of receipt

**Anti-SCML2 Antibody - Protein Information****Name** SCML2**Function**

Putative Polycomb group (PcG) protein. PcG proteins act by forming multiprotein complexes, which are required to maintain the transcriptionally repressive state of homeotic genes throughout development (By similarity).

**Cellular Location**

Nucleus.

**Tissue Location**

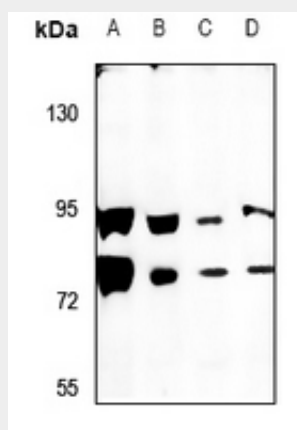
Highly expressed in placenta, thymus and testis. Detected at lower levels in brain, liver, skeletal muscle, pancreas and ovary.

## Anti-SCML2 Antibody - Protocols

Provided below are standard protocols that you may find useful for product applications.

- [Western Blot](#)
- [Blocking Peptides](#)
- [Dot Blot](#)
- [Immunohistochemistry](#)
- [Immunofluorescence](#)
- [Immunoprecipitation](#)
- [Flow Cytometry](#)
- [Cell Culture](#)

## Anti-SCML2 Antibody - Images



Western blot analysis of SCML2 expression in HEK293T (A), K562 (B), A549 (C), H1792 (D) whole cell lysates.

## Anti-SCML2 Antibody - Background

KLH-conjugated synthetic peptide encompassing a sequence within the center region of human SCML2. The exact sequence is proprietary.