

Anti-PIAS3 Antibody
Rabbit polyclonal antibody to PIAS3
Catalog # AP59797**Specification**

Anti-PIAS3 Antibody - Product Information

Application	WB, IHC
Primary Accession	O9Y6X2
Other Accession	O54714
Reactivity	Human, Mouse, Rat, Pig, Bovine, Dog
Host	Rabbit
Clonality	Polyclonal
Calculated MW	68017

Anti-PIAS3 Antibody - Additional Information**Gene ID** 10401**Other Names**

E3 SUMO-protein ligase PIAS3; Protein inhibitor of activated STAT protein 3

Target/Specificity

KLH-conjugated synthetic peptide encompassing a sequence within the N-term region of human PIAS3. The exact sequence is proprietary.

Dilution

WB~~WB (1/500 - 1/1000), IH (1/100 - 1/200)

IHC~~1:100~500

Format

Liquid in 0.42% Potassium phosphate, 0.87% Sodium chloride, pH 7.3, 30% glycerol, and 0.09% (W/V) sodium azide.

Storage

Store at -20 °C. Stable for 12 months from date of receipt

Anti-PIAS3 Antibody - Protein Information**Name** PIAS3**Function**

Functions as an E3-type small ubiquitin-like modifier (SUMO) ligase, stabilizing the interaction between UBE2I and the substrate, and as a SUMO-tethering factor. Plays a crucial role as a transcriptional coregulation in various cellular pathways, including the STAT pathway and the steroid hormone signaling pathway. Involved in regulating STAT3 signaling via inhibiting STAT3 DNA-binding and suppressing cell growth. Enhances the sumoylation of MTA1 and may participate in its paralog-selective sumoylation (PubMed:21965678, PubMed:<a href="http://www.uniprot.org/citations/9388184"

target="_blank">9388184). Sumoylates CCAR2 which promotes its interaction with SIRT1 (PubMed:25406032). Diminishes the sumoylation of ZFH3 by preventing the colocalization of ZFH3 with SUMO1 in the nucleus (PubMed:24651376).

Cellular Location

Cytoplasm {ECO:0000250|UniProtKB:O54714}. Nucleus {ECO:0000250|UniProtKB:O54714}. Nucleus speckle {ECO:0000250|UniProtKB:O54714}. Note=Colocalizes with MITF in the nucleus. Colocalizes with GFI1 in nuclear dots. Colocalizes with SUMO1 in nuclear granules. {ECO:0000250|UniProtKB:O54714}

Tissue Location

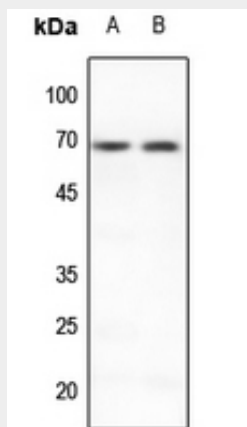
Widely expressed..

Anti-PIAS3 Antibody - Protocols

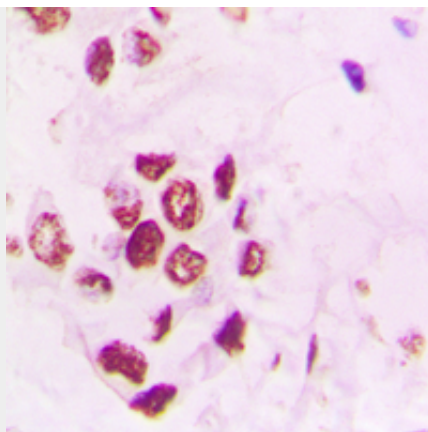
Provided below are standard protocols that you may find useful for product applications.

- [Western Blot](#)
- [Blocking Peptides](#)
- [Dot Blot](#)
- [Immunohistochemistry](#)
- [Immunofluorescence](#)
- [Immunoprecipitation](#)
- [Flow Cytometry](#)
- [Cell Culture](#)

Anti-PIAS3 Antibody - Images



Western blot analysis of PIAS3 expression in rat lung (A), rat spleen (B) whole cell lysates.



Immunohistochemical analysis of PIAS3 staining in human lung cancer formalin fixed paraffin embedded tissue section. The section was pre-treated using heat mediated antigen retrieval with sodium citrate buffer (pH 6.0). The section was then incubated with the antibody at room temperature and detected using an HRP conjugated compact polymer system. DAB was used as the chromogen. The section was then counterstained with haematoxylin and mounted with DPX.

Anti-PIAS3 Antibody - Background

KLH-conjugated synthetic peptide encompassing a sequence within the N-term region of human PIAS3. The exact sequence is proprietary.