

**Anti-AHA1 Antibody**  
**Rabbit polyclonal antibody to AHA1**  
**Catalog # AP59801****Specification**

---

**Anti-AHA1 Antibody - Product Information**

Application	<b>WB, IP</b>
Primary Accession	<a href="#">O95433</a>
Reactivity	<b>Human</b>
Host	<b>Rabbit</b>
Clonality	<b>Polyclonal</b>
Calculated MW	<b>38274</b>

**Anti-AHA1 Antibody - Additional Information****Gene ID** 10598**Other Names**

C14orf3; Activator of 90 kDa heat shock protein ATPase homolog 1; AHA1; p38

**Target/Specificity**

KLH-conjugated synthetic peptide encompassing a sequence within the center region of human AHA1. The exact sequence is proprietary.

**Dilution**

WB~~WB (1/500 - 1/1000), IP (1/10 - 1/100)

IP~~N/A

**Format**

Liquid in 0.42% Potassium phosphate, 0.87% Sodium chloride, pH 7.3, 30% glycerol, and 0.09% (W/V) sodium azide.

**Storage**

Store at -20 °C. Stable for 12 months from date of receipt

**Anti-AHA1 Antibody - Protein Information****Name** AHSA1**Synonyms** C14orf3**Function**

Acts as a co-chaperone of HSP90AA1 (PubMed:<a href="http://www.uniprot.org/citations/29127155" target="\_blank">29127155</a>). Activates the ATPase activity of HSP90AA1 leading to increase in its chaperone activity (PubMed:<a href="http://www.uniprot.org/citations/29127155" target="\_blank">29127155</a>). Competes with the inhibitory co- chaperone FNIP1 for binding to HSP90AA1, thereby providing a reciprocal regulatory mechanism for chaperoning of client proteins (PubMed:<a href="http://www.uniprot.org/citations/29127155" target="\_blank">29127155</a>).

href="http://www.uniprot.org/citations/27353360" target="\_blank">27353360</a>). Competes with the inhibitory co-chaperone TSC1 for binding to HSP90AA1, thereby providing a reciprocal regulatory mechanism for chaperoning of client proteins (PubMed:<a href="http://www.uniprot.org/citations/29127155" target="\_blank">29127155</a>).

**Cellular Location**

Cytoplasm, cytosol. Endoplasmic reticulum. Note=May transiently interact with the endoplasmic reticulum

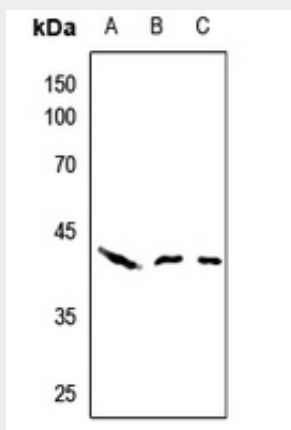
**Tissue Location**

Expressed in numerous tissues, including brain, heart, skeletal muscle and kidney and, at lower levels, liver and placenta.

**Anti-AHA1 Antibody - Protocols**

Provided below are standard protocols that you may find useful for product applications.

- [Western Blot](#)
- [Blocking Peptides](#)
- [Dot Blot](#)
- [Immunohistochemistry](#)
- [Immunofluorescence](#)
- [Immunoprecipitation](#)
- [Flow Cytometry](#)
- [Cell Culture](#)

**Anti-AHA1 Antibody - Images**

Western blot analysis of AHA1 expression in HEK293T (A), HeLa (B), U2OS (C) whole cell lysates.

**Anti-AHA1 Antibody - Background**

KLH-conjugated synthetic peptide encompassing a sequence within the center region of human AHA1. The exact sequence is proprietary.