

**Anti-GPR75 Antibody**  
**Rabbit polyclonal antibody to GPR75**  
**Catalog # AP59805****Specification**

---

**Anti-GPR75 Antibody - Product Information**

Application	WB, IF/IC
Primary Accession	<a href="#">O95800</a>
Other Accession	<a href="#">Q6X632</a>
Reactivity	Human, Mouse, Rat
Host	Rabbit
Clonality	Polyclonal
Calculated MW	59359

**Anti-GPR75 Antibody - Additional Information****Gene ID** 10936**Other Names**

Probable G-protein coupled receptor 75

**Target/Specificity**

Recognizes endogenous levels of GPR75 protein.

**Dilution**

WB~~WB (1/500 - 1/1000), IF/IC (1/100 - 1/500)

IF/IC~~N/A

**Format**

Liquid in 0.42% Potassium phosphate, 0.87% Sodium chloride, pH 7.3, 30% glycerol, and 0.09% (W/V) sodium azide.

**Storage**

Store at -20 °C. Stable for 12 months from date of receipt

**Anti-GPR75 Antibody - Protein Information****Name** GPR75**Function**

G protein-coupled receptor that is activated by the chemokine CCL5/RANTES. Probably coupled to heterotrimeric Gq proteins, it stimulates inositol trisphosphate production and calcium mobilization upon activation. Together with CCL5/RANTES, may play a role in neuron survival through activation of a downstream signaling pathway involving the PI3, Akt and MAP kinases. CCL5/RANTES may also regulate insulin secretion by pancreatic islet cells through activation of this receptor.

**Cellular Location**

Cell membrane; Multi-pass membrane protein

#### **Tissue Location**

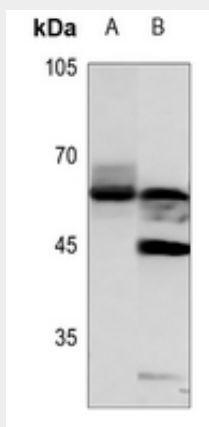
Expressed at high levels in brain and spinal cord and at detectable levels in retinal pigment epithelium. In situ hybridization of adult eye sections localized transcripts only to the perivascular cells, surrounding retinal arterioles, in the ganglion cell/nerve fiber layer. Also expressed by islet cells (at protein level).

#### **Anti-GPR75 Antibody - Protocols**

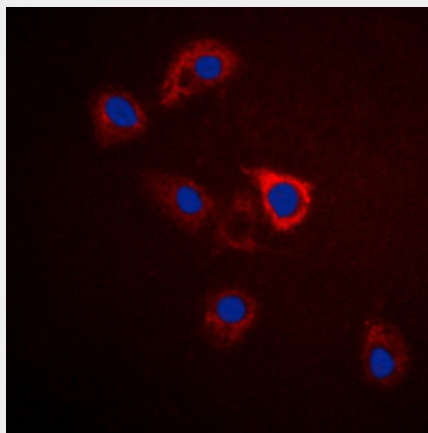
Provided below are standard protocols that you may find useful for product applications.

- [Western Blot](#)
- [Blocking Peptides](#)
- [Dot Blot](#)
- [Immunohistochemistry](#)
- [Immunofluorescence](#)
- [Immunoprecipitation](#)
- [Flow Cytometry](#)
- [Cell Culture](#)

#### **Anti-GPR75 Antibody - Images**



Western blot analysis of GPR75 expression in U2OS (A), rat muscle (B) whole cell lysates.



Immunofluorescent analysis of GPR75 staining in A549 cells. Formalin-fixed cells were

permeabilized with 0.1% Triton X-100 in TBS for 5-10 minutes and blocked with 3% BSA-PBS for 30 minutes at room temperature. Cells were probed with the primary antibody in 3% BSA-PBS and incubated overnight at 4 °C in a humidified chamber. Cells were washed with PBST and incubated with a DyLight 594-conjugated secondary antibody (red) in PBS at room temperature in the dark. DAPI was used to stain the cell nuclei (blue).

**Anti-GPR75 Antibody - Background**

KLH-conjugated synthetic peptide encompassing a sequence within the C-term region of human GPR75. The exact sequence is proprietary.