

**Anti-PRAF2 Antibody**  
**Rabbit polyclonal antibody to PRAF2**  
**Catalog # AP59810****Specification**

---

**Anti-PRAF2 Antibody - Product Information**

Application	WB
Primary Accession	<a href="#">O60831</a>
Other Accession	<a href="#">Q9JIG8</a>
Reactivity	Human, Mouse, Rat, Monkey, Pig, Bovine
Host	Rabbit
Clonality	Polyclonal
Calculated MW	19258

**Anti-PRAF2 Antibody - Additional Information****Gene ID** 11230**Other Names**

PRA1 family protein 2

**Target/Specificity**

Recognizes endogenous levels of PRAF2 protein.

**Dilution**

WB~~WB (1/500 - 1/1000)

**Format**

Liquid in 0.42% Potassium phosphate, 0.87% Sodium chloride, pH 7.3, 30% glycerol, and 0.09% (W/V) sodium azide.

**Storage**

Store at -20 °C. Stable for 12 months from date of receipt

**Anti-PRAF2 Antibody - Protein Information****Name** PRAF2**Function**

May be involved in ER/Golgi transport and vesicular traffic. Plays a proapoptotic role in cerulenin-induced neuroblastoma apoptosis.

**Cellular Location**

Endosome membrane; Multi-pass membrane protein

**Tissue Location**

Strong expression in the brain, small intestine, lung, spleen, and pancreas as well as in tumor tissues of the breast, colon, lung and ovary, with a weaker expression in normal tissues of the

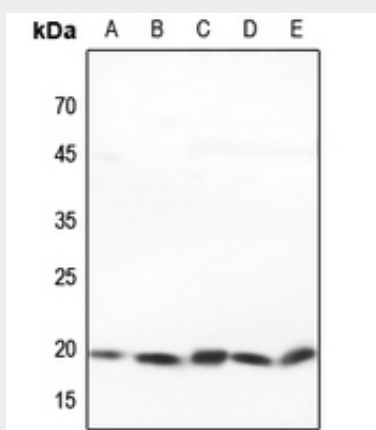
same patient. High expression in neuroblastic tumors. Strongly expressed in Purkinje cells and more moderately in cells of the molecular and the granular layers in the cerebellum. Detected in neuronal cells, but not in non-neuronal cells in the cerebral cortex, hippocampus, and lateral ventricles.

### Anti-PRAF2 Antibody - Protocols

Provided below are standard protocols that you may find useful for product applications.

- [Western Blot](#)
- [Blocking Peptides](#)
- [Dot Blot](#)
- [Immunohistochemistry](#)
- [Immunofluorescence](#)
- [Immunoprecipitation](#)
- [Flow Cytometry](#)
- [Cell Culture](#)

### Anti-PRAF2 Antibody - Images



Western blot analysis of PRAF2 expression in HEK293T (A), Hela (B), mouse brain (C), rat brain (D), rat lung (E) whole cell lysates.

### Anti-PRAF2 Antibody - Background

KLH-conjugated synthetic peptide encompassing a sequence within the C-term region of human PRAF2. The exact sequence is proprietary.