

**Anti-SHANK2 Antibody**  
**Rabbit polyclonal antibody to SHANK2**  
**Catalog # AP59812****Specification**

---

**Anti-SHANK2 Antibody - Product Information**

Application	WB, IP
Primary Accession	<a href="#">Q9UPX8</a>
Reactivity	Human, Mouse, Rat
Host	Rabbit
Clonality	Polyclonal
Calculated MW	201261

**Anti-SHANK2 Antibody - Additional Information****Gene ID** 22941**Other Names**

CORTBP1; KIAA1022; PROSAP1; SH3 and multiple ankyrin repeat domains protein 2; Shank2; Cortactin-binding protein 1; CortBP1; Proline-rich synapse-associated protein 1

**Target/Specificity**

KLH-conjugated synthetic peptide encompassing a sequence within the center region of human SHANK2. The exact sequence is proprietary.

**Dilution**WB~~WB (1/500 - 1/1000), IP (1/10 - 1/100)  
IP~~N/A**Format**

Liquid in 0.42% Potassium phosphate, 0.87% Sodium chloride, pH 7.3, 30% glycerol, and 0.09% (W/V) sodium azide.

**Storage**

Store at -20 °C. Stable for 12 months from date of receipt

**Anti-SHANK2 Antibody - Protein Information****Name** SHANK2**Synonyms** CORTBP1, KIAA1022, PROSAP1**Function**

Seems to be an adapter protein in the postsynaptic density (PSD) of excitatory synapses that interconnects receptors of the postsynaptic membrane including NMDA-type and metabotropic glutamate receptors, and the actin-based cytoskeleton. May play a role in the structural and functional organization of the dendritic spine and synaptic junction.

**Cellular Location**

Apical cell membrane. Cytoplasm. Synapse. Postsynaptic density. Cell projection, growth cone. Cell projection, dendritic spine. Note=Colocalizes with cortactin in growth cones in differentiating hippocampal neurons Colocalized with PDE4D to the apical membrane of colonic crypt cells (By similarity).

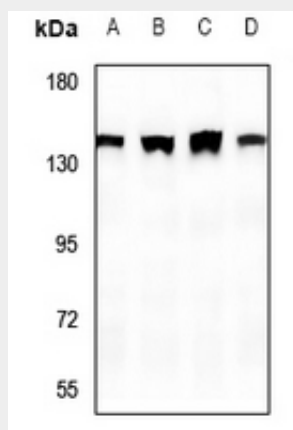
**Tissue Location**

Isoform 3 is present in epithelial colonic cells (at protein level).

**Anti-SHANK2 Antibody - Protocols**

Provided below are standard protocols that you may find useful for product applications.

- [Western Blot](#)
- [Blocking Peptides](#)
- [Dot Blot](#)
- [Immunohistochemistry](#)
- [Immunofluorescence](#)
- [Immunoprecipitation](#)
- [Flow Cytometry](#)
- [Cell Culture](#)

**Anti-SHANK2 Antibody - Images**

Western blot analysis of SHANK2 expression in A549 (A), HCT116 (B), CT26 (C), PC12 (D) whole cell lysates.

**Anti-SHANK2 Antibody - Background**

KLH-conjugated synthetic peptide encompassing a sequence within the center region of human SHANK2. The exact sequence is proprietary.