

Anti-RAB38 Antibody
Rabbit polyclonal antibody to RAB38
Catalog # AP59821**Specification**

Anti-RAB38 Antibody - Product Information

Application	WB
Primary Accession	P57729
Other Accession	Q8QZZ8
Reactivity	Human, Mouse, Rat
Host	Rabbit
Clonality	Polyclonal
Calculated MW	23712

Anti-RAB38 Antibody - Additional Information**Gene ID** 23682**Other Names**

Ras-related protein Rab-38; Melanoma antigen NY-MEL-1

Target/Specificity

KLH-conjugated synthetic peptide encompassing a sequence within the center region of human RAB38. The exact sequence is proprietary.

Dilution

WB~~WB (1/500 - 1/1000)

Format

Liquid in 0.42% Potassium phosphate, 0.87% Sodium chloride, pH 7.3, 30% glycerol, and 0.09% (W/V) sodium azide.

Storage

Store at -20 °C. Stable for 12 months from date of receipt

Anti-RAB38 Antibody - Protein Information**Name** RAB38 ([HGNC:9776](#))**Function**

The small GTPases Rab are key regulators of intracellular membrane trafficking, from the formation of transport vesicles to their fusion with membranes. Rabs cycle between an inactive GDP-bound form and an active GTP-bound form that is able to recruit to membranes different sets of downstream effectors directly responsible for vesicle formation, movement, tethering and fusion (By similarity). RAB38 may be involved in melanosomal transport and docking. Involved in the proper sorting of TYRP1. Involved in peripheral melanosomal distribution of TYRP1 in melanocytes; the function, which probably is implicating vesicle-trafficking, includes cooperation with ANKRD27 and VAMP7 (By similarity). Plays a role in the maturation of phagosomes that engulf pathogens,

such as *S.aureus* and *M.tuberculosis* (PubMed:21255211). Plays an important role in the control of melanin production and melanosome biogenesis (PubMed:23084991). In concert with RAB32, regulates the proper trafficking of melanogenic enzymes TYR, TYRP1 and DCT/TYRP2 to melanosomes in melanocytes (By similarity).

Cellular Location

Cell membrane; Lipid-anchor; Cytoplasmic side. Melanosome. Cytoplasmic vesicle, phagosome. Cytoplasmic vesicle, phagosome membrane; Lipid-anchor; Cytoplasmic side. Melanosome membrane Note=Recruited to phagosomes containing *S.aureus* or *M.tuberculosis* (PubMed:21255211). The BLOC-3 complex, a heterodimer of HPS1 and HPS4 promotes its membrane localization (PubMed:23084991)

Tissue Location

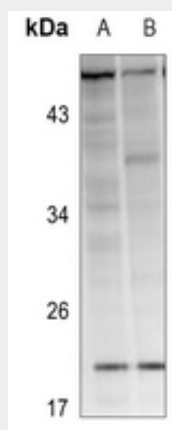
Expressed in melanocytes.

Anti-RAB38 Antibody - Protocols

Provided below are standard protocols that you may find useful for product applications.

- [Western Blot](#)
- [Blocking Peptides](#)
- [Dot Blot](#)
- [Immunohistochemistry](#)
- [Immunofluorescence](#)
- [Immunoprecipitation](#)
- [Flow Cytometry](#)
- [Cell Culture](#)

Anti-RAB38 Antibody - Images



Western blot analysis of RAB38 expression in PC3 (A), A2780 (B) whole cell lysates.

Anti-RAB38 Antibody - Background

KLH-conjugated synthetic peptide encompassing a sequence within the center region of human RAB38. The exact sequence is proprietary.