

Anti-SHCB Antibody
Rabbit polyclonal antibody to SHCB
Catalog # AP59824**Specification**

Anti-SHCB Antibody - Product Information

Application	WB
Primary Accession	P98077
Other Accession	Q8BMC3
Reactivity	Human, Mouse, Rat, Monkey
Host	Rabbit
Clonality	Polyclonal
Calculated MW	61916

Anti-SHCB Antibody - Additional Information**Gene ID** 25759**Other Names**

SCK; SHCB; SHC-transforming protein 2; Protein Sck; SHC-transforming protein B; Src homology 2 domain-containing-transforming protein C2; SH2 domain protein C2

Target/Specificity

Recognizes endogenous levels of SHCB protein.

Dilution

WB~~WB (1/500 - 1/1000), IP (1/10 - 1/100)

Format

Liquid in 0.42% Potassium phosphate, 0.87% Sodium chloride, pH 7.3, 30% glycerol, and 0.09% (W/V) sodium azide.

Storage

Store at -20 °C. Stable for 12 months from date of receipt

Anti-SHCB Antibody - Protein Information**Name** SHC2**Synonyms** SCK, SHCB**Function**

Signaling adapter that couples activated growth factor receptors to signaling pathway in neurons. Involved in the signal transduction pathways of neurotrophin-activated Trk receptors in cortical neurons (By similarity).

Tissue Location

Expressed in brain. Expressed at high level in the hypothalamus and at low level in the caudate

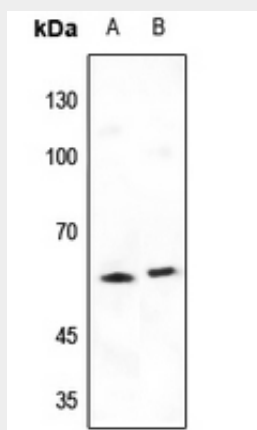
nucleus

Anti-SHCB Antibody - Protocols

Provided below are standard protocols that you may find useful for product applications.

- [Western Blot](#)
- [Blocking Peptides](#)
- [Dot Blot](#)
- [Immunohistochemistry](#)
- [Immunofluorescence](#)
- [Immunoprecipitation](#)
- [Flow Cytometry](#)
- [Cell Culture](#)

Anti-SHCB Antibody - Images



Western blot analysis of SHCB expression in mouse testis (A), rat testis (B) whole cell lysates.

Anti-SHCB Antibody - Background

KLH-conjugated synthetic peptide encompassing a sequence within the center region of human SHCB. The exact sequence is proprietary.