

Anti-RAB26 Antibody
Rabbit polyclonal antibody to RAB26
Catalog # AP59825**Specification**

Anti-RAB26 Antibody - Product Information

Application	WB
Primary Accession	O9ULW5
Reactivity	Human, Mouse, Rat
Host	Rabbit
Clonality	Polyclonal
Calculated MW	27900

Anti-RAB26 Antibody - Additional Information**Gene ID** 25837**Other Names**

Ras-related protein Rab-26

Target/Specificity

Recognizes endogenous levels of RAB26 protein.

Dilution

WB~~WB (1/500 - 1/1000)

Format

Liquid in 0.42% Potassium phosphate, 0.87% Sodium chloride, pH 7.3, 30% glycerol, and 0.09% (W/V) sodium azide.

Storage

Store at -20 °C. Stable for 12 months from date of receipt

Anti-RAB26 Antibody - Protein Information**Name** RAB26 ([HGNC:14259](#))**Function**

The small GTPases Rab are key regulators of intracellular membrane trafficking, from the formation of transport vesicles to their fusion with membranes. Rabs cycle between an inactive GDP-bound form and an active GTP-bound form that is able to recruit to membranes different set of downstream effectors directly responsible for vesicle formation, movement, tethering and fusion (By similarity). RAB26 mediates transport of ADRA2A and ADRA2B from the Golgi to the cell membrane (PubMed:23105096). Plays a role in the maturation of zymogenic granules and in pepsinogen secretion in the stomach (PubMed:20038531). Plays a role in the secretion of amylase from acinar granules in the parotid gland (By similarity).

Cellular Location

Golgi apparatus membrane; Lipid-anchor; Cytoplasmic side. Cytoplasmic vesicle, secretory vesicle membrane; Lipid-anchor; Cytoplasmic side. Note=Not localized at the plasma membrane (By similarity). Inhibition of S-geranylgeranyl cysteine formation abolishes membrane location. {ECO:0000250|UniProtKB:P51156}

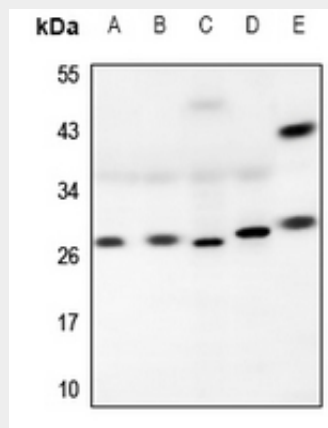
Tissue Location

Predominantly expressed in brain.

Anti-RAB26 Antibody - Protocols

Provided below are standard protocols that you may find useful for product applications.

- [Western Blot](#)
- [Blocking Peptides](#)
- [Dot Blot](#)
- [Immunohistochemistry](#)
- [Immunofluorescence](#)
- [Immunoprecipitation](#)
- [Flow Cytometry](#)
- [Cell Culture](#)

Anti-RAB26 Antibody - Images

Western blot analysis of RAB26 expression in A549 (A), HepG2 (B), LO2 (C), C6 (D), mouse brain (E) whole cell lysates.

Anti-RAB26 Antibody - Background

KLH-conjugated synthetic peptide encompassing a sequence within the C-term region of human RAB26. The exact sequence is proprietary.