

**Anti-SENP3 Antibody**  
**Rabbit polyclonal antibody to SENP3**  
**Catalog # AP59827****Specification**

---

**Anti-SENP3 Antibody - Product Information**

Application	WB, IHC
Primary Accession	<a href="#">O9H4L4</a>
Reactivity	Human, Monkey
Host	Rabbit
Clonality	Polyclonal
Calculated MW	65010

**Anti-SENP3 Antibody - Additional Information****Gene ID** 26168**Other Names**

SSP3; SUSP3; Sentrin-specific protease 3; SUMO-1-specific protease 3; Sentrin/SUMO-specific protease SENP3

**Target/Specificity**

Recognizes endogenous levels of SENP3 protein.

**Dilution**

WB~~WB (1/500 - 1/1000), IH (1/100 - 1/200)

IHC~~1:100~500

**Format**

Liquid in 0.42% Potassium phosphate, 0.87% Sodium chloride, pH 7.3, 30% glycerol, and 0.09% (W/V) sodium azide.

**Storage**

Store at -20 °C. Stable for 12 months from date of receipt

**Anti-SENP3 Antibody - Protein Information****Name** SENP3**Function**

Protease that releases SUMO2 and SUMO3 monomers from sumoylated substrates, but has only weak activity against SUMO1 conjugates (PubMed: [16608850](http://www.uniprot.org/citations/16608850), PubMed: [32832608](http://www.uniprot.org/citations/32832608), PubMed: [36050397](http://www.uniprot.org/citations/36050397)).

Deconjugates SUMO2 from MEF2D, which increases its transcriptional activation capability (PubMed: [15743823](http://www.uniprot.org/citations/15743823)).

Deconjugates SUMO2 and SUMO3 from CDCA8 (PubMed: [15743823](#)).

href="http://www.uniprot.org/citations/18946085" target="\_blank">18946085</a>). Redox sensor that, when redistributed into nucleoplasm, can act as an effector to enhance HIF1A transcriptional activity by desumoylating EP300 (PubMed:<a href="http://www.uniprot.org/citations/19680224" target="\_blank">19680224</a>). Required for rRNA processing through deconjugation of SUMO2 and SUMO3 from nucleophosmin, NPM1 (PubMed:<a href="http://www.uniprot.org/citations/19015314" target="\_blank">19015314</a>). Plays a role in the regulation of sumoylation status of ZNF148 (PubMed:<a href="http://www.uniprot.org/citations/18259216" target="\_blank">18259216</a>). Functions as a component of the Five Friends of Methylated CHTOP (5FMC) complex; the 5FMC complex is recruited to ZNF148 by methylated CHTOP, leading to desumoylation of ZNF148 and subsequent transactivation of ZNF148 target genes (PubMed:<a href="http://www.uniprot.org/citations/22872859" target="\_blank">22872859</a>). Deconjugates SUMO2 from KAT5 (PubMed:<a href="http://www.uniprot.org/citations/32832608" target="\_blank">32832608</a>). Catalyzes desumoylation of MRE11 (PubMed:<a href="http://www.uniprot.org/citations/36050397" target="\_blank">36050397</a>).

### Cellular Location

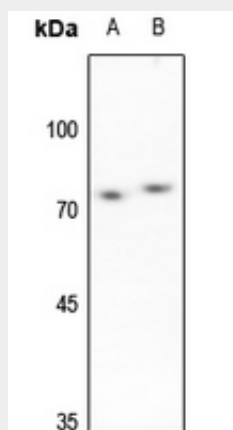
Nucleus, nucleolus. Nucleus, nucleoplasm. Cytoplasm {ECO:0000250|UniProtKB:Q9EP97} Note=Redistributes between the nucleolus and the nucleoplasm in response to mild oxidative stress (PubMed:19680224). Mainly found in the nucleoplasm, with low levels detected in the cytoplasmic and chromatin fractions (By similarity). {ECO:0000250|UniProtKB:Q9EP97, ECO:0000269|PubMed:19680224}

### Anti-SENP3 Antibody - Protocols

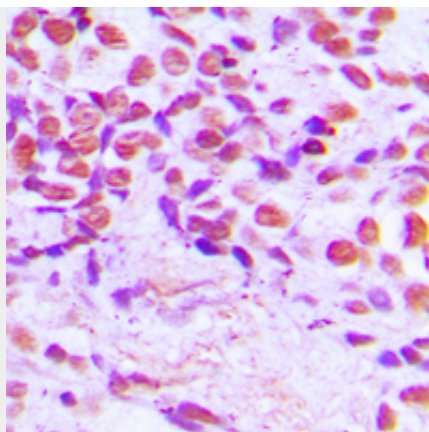
Provided below are standard protocols that you may find useful for product applications.

- [Western Blot](#)
- [Blocking Peptides](#)
- [Dot Blot](#)
- [Immunohistochemistry](#)
- [Immunofluorescence](#)
- [Immunoprecipitation](#)
- [Flow Cytometry](#)
- [Cell Culture](#)

### Anti-SENP3 Antibody - Images



Western blot analysis of SENP3 expression in HeLa (A), H1688 (B) whole cell lysates.



Immunohistochemical analysis of SENP3 staining in human breast cancer formalin fixed paraffin embedded tissue section. The section was pre-treated using heat mediated antigen retrieval with sodium citrate buffer (pH 6.0). The section was then incubated with the antibody at room temperature and detected using an HRP conjugated compact polymer system. DAB was used as the chromogen. The section was then counterstained with haematoxylin and mounted with DPX.

#### **Anti-SENP3 Antibody - Background**

KLH-conjugated synthetic peptide encompassing a sequence within the N-term region of human SENP3. The exact sequence is proprietary.