

Anti-STEAP1 Antibody
Rabbit polyclonal antibody to STEAP1
Catalog # AP59828**Specification**

Anti-STEAP1 Antibody - Product Information

Application	WB, IHC
Primary Accession	Q9UHE8
Reactivity	Human
Host	Rabbit
Clonality	Polyclonal
Calculated MW	39851

Anti-STEAP1 Antibody - Additional Information**Gene ID** 26872**Other Names**

PRSS24; STEAP; Metalloreductase STEAP1; Six-transmembrane epithelial antigen of prostate 1

Target/Specificity

KLH-conjugated synthetic peptide encompassing a sequence within the N-term region of human STEAP1. The exact sequence is proprietary.

Dilution

WB~~WB (1/500 - 1/1000), IH (1/100 - 1/200)

IHC~~1:100~500

Format

Liquid in 0.42% Potassium phosphate, 0.87% Sodium chloride, pH 7.3, 30% glycerol, and 0.09% (W/V) sodium azide.

Storage

Store at -20 °C. Stable for 12 months from date of receipt

Anti-STEAP1 Antibody - Protein Information**Name** STEAP1**Synonyms** PRSS24, STEAP**Function**

Does not function as a metalloreductase due to the absence of binding sites for the electron-donating substrate NADPH. Promotes Fe(3+) reduction when fused to the NADPH-binding domain of STEAP4.

Cellular Location

Endosome membrane {ECO:0000250|UniProtKB:Q9CWR7}; Multi-pass membrane protein. Cell

membrane; Multi-pass membrane protein

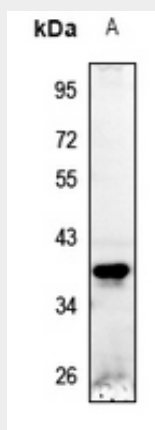
Tissue Location

Ubiquitously expressed. Highly expressed in prostate tumors.

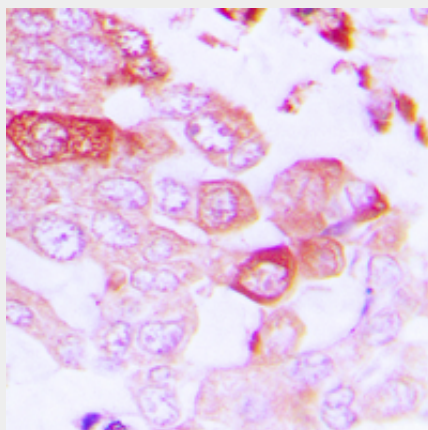
Anti-STEAP1 Antibody - Protocols

Provided below are standard protocols that you may find useful for product applications.

- [Western Blot](#)
- [Blocking Peptides](#)
- [Dot Blot](#)
- [Immunohistochemistry](#)
- [Immunofluorescence](#)
- [Immunoprecipitation](#)
- [Flow Cytometry](#)
- [Cell Culture](#)

Anti-STEAP1 Antibody - Images

Western blot analysis of STEAP1 expression in U87MG (A) whole cell lysates.



Immunohistochemical analysis of STEAP1 staining in human lung cancer formalin fixed paraffin embedded tissue section. The section was pre-treated using heat mediated antigen retrieval with sodium citrate buffer (pH 6.0). The section was then incubated with the antibody at room temperature and detected using an HRP conjugated compact polymer system. DAB was used as

the chromogen. The section was then counterstained with haematoxylin and mounted with DPX.

Anti-STEAP1 Antibody - Background

KLH-conjugated synthetic peptide encompassing a sequence within the N-term region of human STEAP1. The exact sequence is proprietary.