

Anti-RANBP6 Antibody
Rabbit polyclonal antibody to RANBP6
Catalog # AP59829**Specification**

Anti-RANBP6 Antibody - Product Information

Application	WB, IH, IF
Primary Accession	O60518
Other Accession	Q8BIV3
Reactivity	Human, Mouse, Rat, Monkey
Host	Rabbit
Clonality	Polyclonal
Calculated MW	124714

Anti-RANBP6 Antibody - Additional Information**Gene ID** 26953**Other Names**

Ran-binding protein 6; RanBP6

Target/Specificity

Recognizes endogenous levels of RANBP6 protein.

Dilution

WB~~WB (1/500 - 1/1000), IH (1/100 - 1/200), IF/IC (1/100 - 1/500), IP (1/10 - 1/100)

IH~~WB (1/500 - 1/1000), IH (1/100 - 1/200), IF/IC (1/100 - 1/500), IP (1/10 - 1/100)

IF~~WB (1/500 - 1/1000), IH (1/100 - 1/200), IF/IC (1/100 - 1/500), IP (1/10 - 1/100)

Format

Liquid in 0.42% Potassium phosphate, 0.87% Sodium chloride, pH 7.3, 30% glycerol, and 0.09% (W/V) sodium azide.

Storage

Store at -20 °C. Stable for 12 months from date of receipt

Anti-RANBP6 Antibody - Protein Information**Name** RANBP6**Function**

May function in nuclear protein import as nuclear transport receptor.

Cellular Location

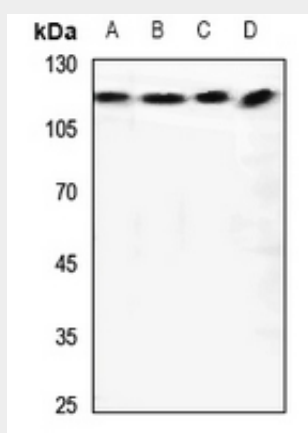
Cytoplasm. Nucleus.

Anti-RANBP6 Antibody - Protocols

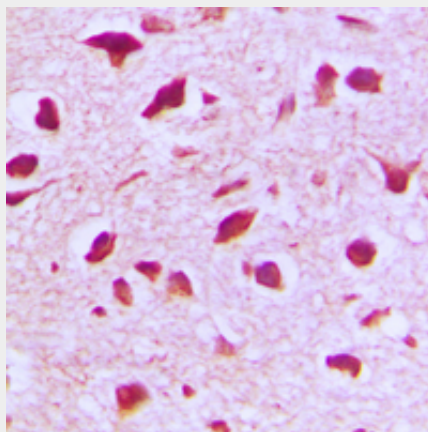
Provided below are standard protocols that you may find useful for product applications.

- [Western Blot](#)
- [Blocking Peptides](#)
- [Dot Blot](#)
- [Immunohistochemistry](#)
- [Immunofluorescence](#)
- [Immunoprecipitation](#)
- [Flow Cytometry](#)
- [Cell Culture](#)

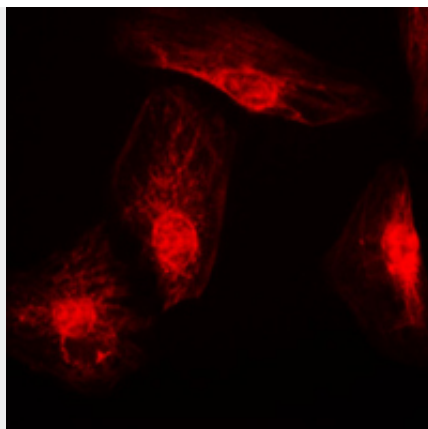
Anti-RANBP6 Antibody - Images



Western blot analysis of RANBP6 expression in Hela (A), mouse brain (B), rat brain (C), rat testis (D) whole cell lysates.



Immunohistochemical analysis of RANBP6 staining in human brain formalin fixed paraffin embedded tissue section. The section was pre-treated using heat mediated antigen retrieval with sodium citrate buffer (pH 6.0). The section was then incubated with the antibody at room temperature and detected using an HRP conjugated compact polymer system. DAB was used as the chromogen. The section was then counterstained with haematoxylin and mounted with DPX.



Immunofluorescent analysis of RANBP6 staining in K562 cells. Formalin-fixed cells were permeabilized with 0.1% Triton X-100 in TBS for 5-10 minutes and blocked with 3% BSA-PBS for 30 minutes at room temperature. Cells were probed with the primary antibody in 3% BSA-PBS and incubated overnight at 4 °C in a humidified chamber. Cells were washed with PBST and incubated with a DyLight 594-conjugated secondary antibody (red) in PBS at room temperature in the dark.

Anti-RANBP6 Antibody - Background

KLH-conjugated synthetic peptide encompassing a sequence within the center region of human RANBP6. The exact sequence is proprietary.