

**Anti-SND1 Antibody**  
**Rabbit polyclonal antibody to SND1**  
**Catalog # AP59830****Specification**

---

**Anti-SND1 Antibody - Product Information**

Application	WB
Primary Accession	<a href="#">Q7KZF4</a>
Reactivity	Human, Mouse, Rat, Bovine
Host	Rabbit
Clonality	Polyclonal
Calculated MW	101997

**Anti-SND1 Antibody - Additional Information****Gene ID** 27044**Other Names**

TDRD11; Staphylococcal nuclease domain-containing protein 1; 100 kDa coactivator; EBNA2 coactivator p100; Tudor domain-containing protein 11; p100 co-activator

**Target/Specificity**

KLH-conjugated synthetic peptide encompassing a sequence within the center region of human SND1. The exact sequence is proprietary.

**Dilution**

WB~~WB (1/500 - 1/1000)

**Format**

Liquid in 0.42% Potassium phosphate, 0.87% Sodium chloride, pH 7.3, 30% glycerol, and 0.09% (W/V) sodium azide.

**Storage**

Store at -20 °C. Stable for 12 months from date of receipt

**Anti-SND1 Antibody - Protein Information****Name** SND1**Synonyms** TDRD11**Function**

Endonuclease that mediates miRNA decay of both protein-free and AGO2-loaded miRNAs (PubMed: [18453631](http://www.uniprot.org/citations/18453631)), PubMed: [28546213](http://www.uniprot.org/citations/28546213)). As part of its function in miRNA decay, regulates mRNAs involved in G1-to-S phase transition (PubMed: [28546213](http://www.uniprot.org/citations/28546213)). Functions as a bridging factor between STAT6 and the basal transcription factor (PubMed: [28546213](http://www.uniprot.org/citations/28546213)).

href="http://www.uniprot.org/citations/12234934" target="\_blank">12234934</a>). Plays a role in PIM1 regulation of MYB activity (PubMed:<a href="http://www.uniprot.org/citations/9809063" target="\_blank">9809063</a>). Functions as a transcriptional coactivator for STAT5 (By similarity).

#### Cellular Location

Cytoplasm. Nucleus. Melanosome Note=In IL-4 stimulated cells colocalizes with STAT6 in the nucleus (PubMed:12234934). Identified by mass spectrometry in melanosome fractions from stage I to stage IV (PubMed:17081065)

#### Tissue Location

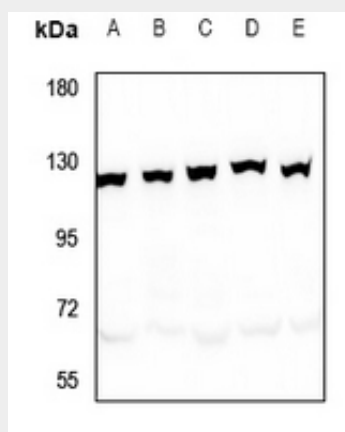
Ubiquitously expressed.

### Anti-SND1 Antibody - Protocols

Provided below are standard protocols that you may find useful for product applications.

- [Western Blot](#)
- [Blocking Peptides](#)
- [Dot Blot](#)
- [Immunohistochemistry](#)
- [Immunofluorescence](#)
- [Immunoprecipitation](#)
- [Flow Cytometry](#)
- [Cell Culture](#)

### Anti-SND1 Antibody - Images



Western blot analysis of SND1 expression in HepG2 (A), HCT116 (B), A2780 (C), H9C2 (D), AML12 (E) whole cell lysates.

### Anti-SND1 Antibody - Background

KLH-conjugated synthetic peptide encompassing a sequence within the center region of human SND1. The exact sequence is proprietary.