

**Anti-BMP10 Antibody**  
**Rabbit polyclonal antibody to BMP10**  
**Catalog # AP59832****Specification**

---

**Anti-BMP10 Antibody - Product Information**

Application	WB
Primary Accession	<a href="#">O95393</a>
Other Accession	<a href="#">O9R229</a>
Reactivity	Human, Mouse, Rat
Host	Rabbit
Clonality	Polyclonal
Calculated MW	48047

**Anti-BMP10 Antibody - Additional Information****Gene ID** 27302**Other Names**

Bone morphogenetic protein 10; BMP-10

**Target/Specificity**

Recognizes endogenous levels of BMP10 protein.

**Dilution**

WB~~WB (1/500 - 1/1000)

**Format**

Liquid in 0.42% Potassium phosphate, 0.87% Sodium chloride, pH 7.3, 30% glycerol, and 0.09% (W/V) sodium azide.

**Storage**

Store at -20 °C. Stable for 12 months from date of receipt

**Anti-BMP10 Antibody - Protein Information****Name** BMP10**Function**

Required for maintaining the proliferative activity of embryonic cardiomyocytes by preventing premature activation of the negative cell cycle regulator CDKN1C/p57KIP and maintaining the required expression levels of cardiogenic factors such as MEF2C and NKX2-5. Acts as a ligand for ACVRL1/ALK1, BMPR1A/ALK3 and BMPR1B/ALK6, leading to activation of SMAD1, SMAD5 and SMAD8 transcription factors. Inhibits endothelial cell migration and growth. May reduce cell migration and cell matrix adhesion in breast cancer cell lines.

**Cellular Location**

Secreted.

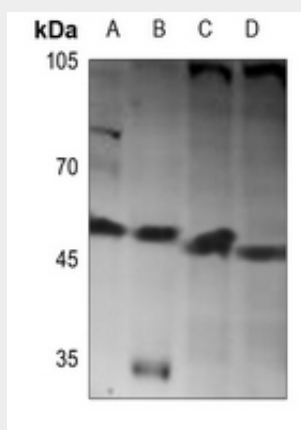
**Tissue Location**

Detected in mammary epithelia (at protein level).

**Anti-BMP10 Antibody - Protocols**

Provided below are standard protocols that you may find useful for product applications.

- [Western Blot](#)
- [Blocking Peptides](#)
- [Dot Blot](#)
- [Immunohistochemistry](#)
- [Immunofluorescence](#)
- [Immunoprecipitation](#)
- [Flow Cytometry](#)
- [Cell Culture](#)

**Anti-BMP10 Antibody - Images**

Western blot analysis of BMP10 expression in mouse liver (A), rat heart (B), Jurkat (C), HepG2 (D) whole cell lysates.

**Anti-BMP10 Antibody - Background**

KLH-conjugated synthetic peptide encompassing a sequence within the center region of human BMP10. The exact sequence is proprietary.