

**Anti-GPR132 Antibody**  
**Rabbit polyclonal antibody to GPR132**  
**Catalog # AP59837****Specification**

---

**Anti-GPR132 Antibody - Product Information**

Application	WB
Primary Accession	<a href="#">O9UNW8</a>
Reactivity	Human
Host	Rabbit
Clonality	Polyclonal
Calculated MW	42499

**Anti-GPR132 Antibody - Additional Information****Gene ID** 29933**Other Names**

G2A; Probable G-protein coupled receptor 132; G2 accumulation protein

**Target/Specificity**

KLH-conjugated synthetic peptide encompassing a sequence within the C-term region of human GPR132. The exact sequence is proprietary.

**Dilution**

WB~~WB (1/500 - 1/1000)

**Format**

Liquid in 0.42% Potassium phosphate, 0.87% Sodium chloride, pH 7.3, 30% glycerol, and 0.09% (W/V) sodium azide.

**Storage**

Store at -20 °C. Stable for 12 months from date of receipt

**Anti-GPR132 Antibody - Protein Information****Name** GPR132**Synonyms** G2A**Function**

May be a receptor for oxidized free fatty acids derived from linoleic and arachidonic acids such as 9-hydroxyoctadecadienoic acid (9-HODE). Activates a G alpha protein, most likely G alpha(q). May be involved in apoptosis. Functions at the G2/M checkpoint to delay mitosis. May function as a sensor that monitors the oxidative states and mediates appropriate cellular responses such as secretion of paracrine signals and attenuation of proliferation. May mediate the accumulation of intracellular inositol phosphates at acidic pH through proton-sensing activity.

**Cellular Location**

Cell membrane; Multi-pass membrane protein. Note=Internalized and accumulated in endosomal compartments. LPC triggers the relocalization from the endosomal compartment to the cell surface (By similarity).

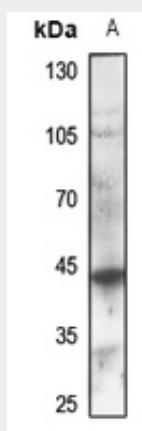
**Tissue Location**

Highly expressed in macrophages and hematopoietic tissues rich in lymphocytes, like spleen and thymus. Weakly expressed in heart and lung. In atherosclerotic plaques, expression is observed around the lipid core and at the shoulder region

**Anti-GPR132 Antibody - Protocols**

Provided below are standard protocols that you may find useful for product applications.

- [Western Blot](#)
- [Blocking Peptides](#)
- [Dot Blot](#)
- [Immunohistochemistry](#)
- [Immunofluorescence](#)
- [Immunoprecipitation](#)
- [Flow Cytometry](#)
- [Cell Culture](#)

**Anti-GPR132 Antibody - Images**

Western blot analysis of GPR132 expression in HeLa (A) whole cell lysates.

**Anti-GPR132 Antibody - Background**

KLH-conjugated synthetic peptide encompassing a sequence within the C-term region of human GPR132. The exact sequence is proprietary.