

**Anti-RPL26L1 Antibody**  
**Rabbit polyclonal antibody to RPL26L1**  
**Catalog # AP59838****Specification**

---

**Anti-RPL26L1 Antibody - Product Information**

Application	WB, IH
Primary Accession	<a href="#">O9UNX3</a>
Reactivity	Human, Mouse, Rat
Host	Rabbit
Clonality	Polyclonal
Calculated MW	17256

**Anti-RPL26L1 Antibody - Additional Information****Gene ID** 51121**Other Names**

RPL26P1; 60S ribosomal protein L26-like 1

**Target/Specificity**

Recognizes endogenous levels of RPL26L1 protein.

**Dilution**

WB~~WB (1/500 - 1/1000), IH (1/100 - 1/200)

IH~~WB (1/500 - 1/1000), IH (1/100 - 1/200)

**Format**

Liquid in 0.42% Potassium phosphate, 0.87% Sodium chloride, pH 7.3, 30% glycerol, and 0.09% (W/V) sodium azide.

**Storage**

Store at -20 °C. Stable for 12 months from date of receipt

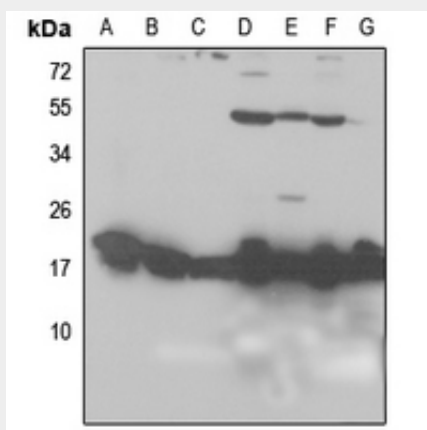
**Anti-RPL26L1 Antibody - Protein Information****Name** RPL26L1**Synonyms** RPL26P1**Anti-RPL26L1 Antibody - Protocols**

Provided below are standard protocols that you may find useful for product applications.

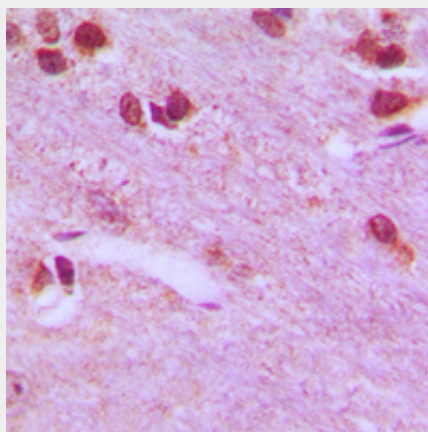
- [Western Blot](#)
- [Blocking Peptides](#)

- [Dot Blot](#)
- [Immunohistochemistry](#)
- [Immunofluorescence](#)
- [Immunoprecipitation](#)
- [Flow Cytometry](#)
- [Cell Culture](#)

#### Anti-RPL26L1 Antibody - Images



Western blot analysis of RPL26L1 expression in HEK293T (A), Hela (B), H1688 (C), mouse liver (D), mouse kidney (E), rat liver (F), rat kidney (G) whole cell lysates.



Immunohistochemical analysis of RPL26L1 staining in human brain formalin fixed paraffin embedded tissue section. The section was pre-treated using heat mediated antigen retrieval with sodium citrate buffer (pH 6.0). The section was then incubated with the antibody at room temperature and detected using an HRP conjugated compact polymer system. DAB was used as the chromogen. The section was then counterstained with haematoxylin and mounted with DPX.

#### Anti-RPL26L1 Antibody - Background

KLH-conjugated synthetic peptide encompassing a sequence within the C-term region of human RPL26L1. The exact sequence is proprietary.