

**Anti-RHCG Antibody**  
**Rabbit polyclonal antibody to RHCG**  
**Catalog # AP59841****Specification**

---

**Anti-RHCG Antibody - Product Information**

Application	WB
Primary Accession	<a href="#">Q9UBD6</a>
Reactivity	Human
Host	Rabbit
Clonality	Polyclonal
Calculated MW	53179

**Anti-RHCG Antibody - Additional Information****Gene ID** 51458**Other Names**

C15orf6; CDRC2; PDRC2; RHGK; Ammonium transporter Rh type C; Rh glycoprotein kidney; Rhesus blood group family type C glycoprotein; Rh family type C glycoprotein; Rh type C glycoprotein; Tumor-related protein DRC2

**Target/Specificity**

Recognizes endogenous levels of RHCG protein.

**Dilution**

WB~~WB (1/500 - 1/1000)

**Format**

Liquid in 0.42% Potassium phosphate, 0.87% Sodium chloride, pH 7.3, 30% glycerol, and 0.09% (W/V) sodium azide.

**Storage**

Store at -20 °C. Stable for 12 months from date of receipt

**Anti-RHCG Antibody - Protein Information****Name** RHCG**Synonyms** C15orf6, CDRC2, PDRC2, RHGK**Function**

Ammonium transporter involved in the maintenance of acid-base homeostasis. Transports ammonium and its related derivative methylammonium across the plasma membrane of epithelial cells likely contributing to renal transepithelial ammonia transport and ammonia metabolism. Postulated to primarily mediate an electroneutral bidirectional transport of NH<sub>3</sub> ammonia species according to a mechanism that implies interaction of an NH<sub>4</sub>(+) ion with acidic residues of the pore entry followed by dissociation of NH<sub>4</sub>(+) into NH<sub>3</sub> and H(+). As a result NH<sub>3</sub> transits through

the central pore and is protonated on the extracellular side reforming  $\text{NH}_4^+$  (PubMed:<a href="http://www.uniprot.org/citations/11062476" target="\_blank">11062476</a>, PubMed:<a href="http://www.uniprot.org/citations/14761968" target="\_blank">14761968</a>, PubMed:<a href="http://www.uniprot.org/citations/15929723" target="\_blank">15929723</a>, PubMed:<a href="http://www.uniprot.org/citations/16477434" target="\_blank">16477434</a>, PubMed:<a href="http://www.uniprot.org/citations/16580862" target="\_blank">16580862</a>, PubMed:<a href="http://www.uniprot.org/citations/24077989" target="\_blank">24077989</a>). May act as a  $\text{CO}_2$  channel providing for renal acid secretion (PubMed:<a href="http://www.uniprot.org/citations/24077989" target="\_blank">24077989</a>).

#### Cellular Location

Cell membrane; Multi-pass membrane protein. Apical cell membrane; Multi-pass membrane protein. Note=Also detected at the basolateral membrane and in subapical vesicles.

#### Tissue Location

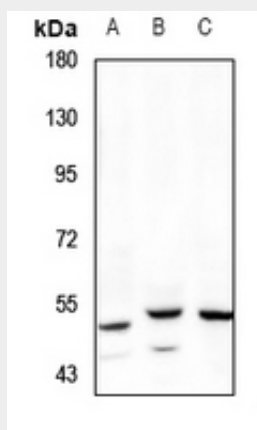
Expressed in brain, testis, placenta, pancreas, esophagus and prostate. Expressed in squamous epithelial tissues (at protein level). Expressed in kidney.

### Anti-RHCG Antibody - Protocols

Provided below are standard protocols that you may find useful for product applications.

- [Western Blot](#)
- [Blocking Peptides](#)
- [Dot Blot](#)
- [Immunohistochemistry](#)
- [Immunofluorescence](#)
- [Immunoprecipitation](#)
- [Flow Cytometry](#)
- [Cell Culture](#)

### Anti-RHCG Antibody - Images



Western blot analysis of RHCG expression in A549 (A), Panc1 (B), MEF (C) whole cell lysates.

### Anti-RHCG Antibody - Background

KLH-conjugated synthetic peptide encompassing a sequence within the center region of human RHCG. The exact sequence is proprietary.