

Anti-NUB1 Antibody
Rabbit polyclonal antibody to NUB1
Catalog # AP59844**Specification**

Anti-NUB1 Antibody - Product Information

Application	WB, IHC
Primary Accession	Q9Y5A7
Reactivity	Human
Host	Rabbit
Clonality	Polyclonal
Calculated MW	70538

Anti-NUB1 Antibody - Additional Information**Gene ID** 51667**Other Names**

NYREN18; NEDD8 ultimate buster 1; Negative regulator of ubiquitin-like proteins 1; Renal carcinoma antigen NY-REN-18

Target/Specificity

KLH-conjugated synthetic peptide encompassing a sequence within the C-term region of human NUB1. The exact sequence is proprietary.

Dilution

WB~~WB (1/500 - 1/1000), IH (1/100 - 1/200)

IHC~~1:100~500

Format

Liquid in 0.42% Potassium phosphate, 0.87% Sodium chloride, pH 7.3, 30% glycerol, and 0.09% (W/V) sodium azide.

Storage

Store at -20 °C. Stable for 12 months from date of receipt

Anti-NUB1 Antibody - Protein Information**Name** NUB1**Synonyms** NYREN18**Function**

Specific down-regulator of the NEDD8 conjugation system. Recruits NEDD8, UBD, and their conjugates to the proteasome for degradation. Isoform 1 promotes the degradation of NEDD8 more efficiently than isoform 2.

Cellular Location

Nucleus. Note=Predominantly nuclear

Tissue Location

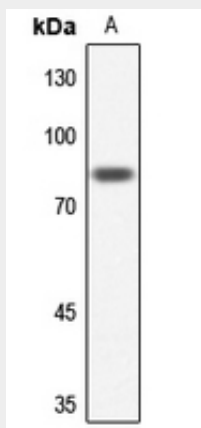
Widely expressed with lowest expression in the pancreas for isoform 1 and in leukocytes, liver, prostate and skeletal muscle for isoform 2

Anti-NUB1 Antibody - Protocols

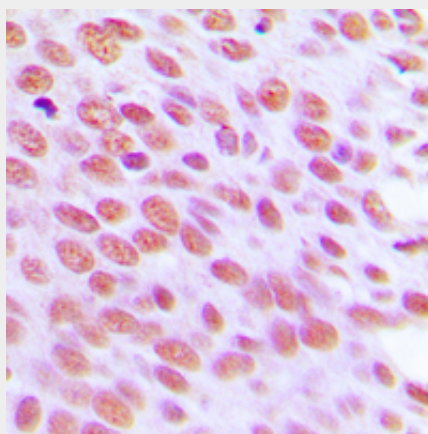
Provided below are standard protocols that you may find useful for product applications.

- [Western Blot](#)
- [Blocking Peptides](#)
- [Dot Blot](#)
- [Immunohistochemistry](#)
- [Immunofluorescence](#)
- [Immunoprecipitation](#)
- [Flow Cytometry](#)
- [Cell Culture](#)

Anti-NUB1 Antibody - Images



Western blot analysis of NUB1 expression in HeLa (A) whole cell lysates.



Immunohistochemical analysis of NUB1 staining in human breast cancer formalin fixed paraffin embedded tissue section. The section was pre-treated using heat mediated antigen retrieval with sodium citrate buffer (pH 6.0). The section was then incubated with the antibody at room

temperature and detected using an HRP conjugated compact polymer system. DAB was used as the chromogen. The section was then counterstained with haematoxylin and mounted with DPX.

Anti-NUB1 Antibody - Background

KLH-conjugated synthetic peptide encompassing a sequence within the C-term region of human NUB1. The exact sequence is proprietary.