

Anti-GIMAP4 Antibody
Rabbit polyclonal antibody to GIMAP4
Catalog # AP59849**Specification**

Anti-GIMAP4 Antibody - Product Information

Application	WB, IP, IHC
Primary Accession	O9NUV9
Reactivity	Human, Mouse, Rat
Host	Rabbit
Clonality	Polyclonal
Calculated MW	37534

Anti-GIMAP4 Antibody - Additional Information**Gene ID** 55303**Other Names**

IAN1; IMAP4; GTPase IMAP family member 4; Immunity-associated nucleotide 1 protein; IAN-1; hIAN1; Immunity-associated protein 4

Target/Specificity

KLH-conjugated synthetic peptide encompassing a sequence within the center region of human GIMAP4. The exact sequence is proprietary.

Dilution

WB~~WB (1/500 - 1/1000), IH (1/100 - 1/200), IP (1/10 - 1/100)

IP~~N/A

IHC~~1:100~500

Format

Liquid in 0.42% Potassium phosphate, 0.87% Sodium chloride, pH 7.3, 30% glycerol, and 0.09% (W/V) sodium azide.

Storage

Store at -20 °C. Stable for 12 months from date of receipt

Anti-GIMAP4 Antibody - Protein Information**Name** GIMAP4**Synonyms** IAN1, IMAP4**Function**

During thymocyte development, may play a role in the regulation of apoptosis (By similarity). GTPase which exhibits a higher affinity for GDP than for GTP.

Cellular Location

Cytoplasm, cytosol.

Tissue Location

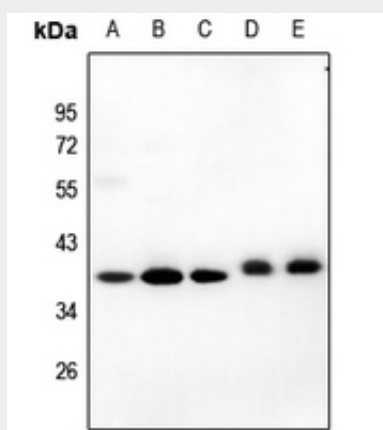
Highly expressed in spleen and peripheral blood leukocytes that contain mostly T- and B-lymphocytes. Expressed specifically in resting T- and B-lymphocytes and expression significantly decreases during B- or T-lymphocyte activation. Expressed at lower levels in thymus, ovary, colon and small intestine

Anti-GIMAP4 Antibody - Protocols

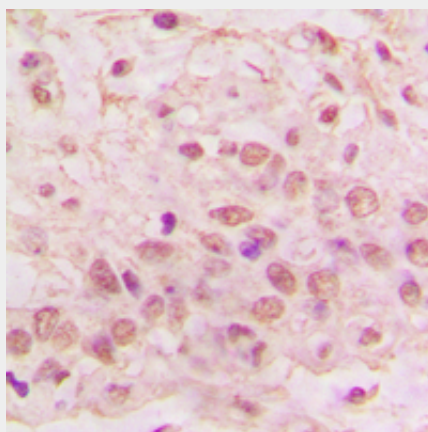
Provided below are standard protocols that you may find useful for product applications.

- [Western Blot](#)
- [Blocking Peptides](#)
- [Dot Blot](#)
- [Immunohistochemistry](#)
- [Immunofluorescence](#)
- [Immunoprecipitation](#)
- [Flow Cytometry](#)
- [Cell Culture](#)

Anti-GIMAP4 Antibody - Images



Western blot analysis of GIMAP4 expression in CT26 (A), HCT116 (B), A2780 (C), mouse spleen (D), rat spleen (E) whole cell lysates.



Immunohistochemical analysis of GIMAP4 staining in human lung cancer formalin fixed paraffin embedded tissue section. The section was pre-treated using heat mediated antigen retrieval with sodium citrate buffer (pH 6.0). The section was then incubated with the antibody at room temperature and detected using an HRP conjugated compact polymer system. DAB was used as the chromogen. The section was then counterstained with haematoxylin and mounted with DPX.

Anti-GIMAP4 Antibody - Background

KLH-conjugated synthetic peptide encompassing a sequence within the center region of human GIMAP4. The exact sequence is proprietary.