

Anti-ARRDC3 Antibody
Rabbit polyclonal antibody to ARRDC3
Catalog # AP59860**Specification**

Anti-ARRDC3 Antibody - Product Information

Application	WB, IP, IF/IC, IHC
Primary Accession	Q96B67
Other Accession	Q7TPQ9
Reactivity	Human, Mouse, Rat, Monkey
Host	Rabbit
Clonality	Polyclonal
Calculated MW	46395

Anti-ARRDC3 Antibody - Additional Information**Gene ID** 57561**Other Names**

KIAA1376; Arrestin domain-containing protein 3; TBP-2-like inducible membrane protein; TLIMP

Target/Specificity

Recognizes endogenous levels of ARRDC3 protein.

Dilution

WB~~WB (1/500 - 1/1000), IH (1/100 - 1/200), IF/IC (1/100 - 1/500), IP (1/10 - 1/100)

IP~~N/A

IF/IC~~N/A

IHC~~1:100~500

Format

Liquid in 0.42% Potassium phosphate, 0.87% Sodium chloride, pH 7.3, 30% glycerol, and 0.09% (W/V) sodium azide.

Storage

Store at -20 °C. Stable for 12 months from date of receipt

Anti-ARRDC3 Antibody - Protein Information**Name** ARRDC3**Synonyms** KIAA1376**Function**

Adapter protein that plays a role in regulating cell-surface expression of adrenergic receptors and probably also other G protein- coupled receptors (PubMed:20559325, PubMed:21982743, PubMed:21982743)

<http://www.uniprot.org/citations/23208550>). Plays a role in NEDD4-mediated ubiquitination and endocytosis of activated ADRB2 and subsequent ADRB2 degradation (PubMed:[20559325](http://www.uniprot.org/citations/20559325), PubMed:[23208550](http://www.uniprot.org/citations/23208550)). May recruit NEDD4 to ADRB2 (PubMed:[20559325](http://www.uniprot.org/citations/20559325)). Alternatively, may function as adapter protein that does not play a major role in recruiting NEDD4 to ADRB2, but rather plays a role in a targeting ADRB2 to endosomes (PubMed:[23208550](http://www.uniprot.org/citations/23208550)).

Cellular Location

Cytoplasm. Cell membrane; Peripheral membrane protein; Cytoplasmic side Lysosome Endosome Early endosome. Note=Associated with plasma membrane, as well as with endosomes and lysosomes during endocytosis (PubMed:16269462, PubMed:20559325, PubMed:23208550)

Tissue Location

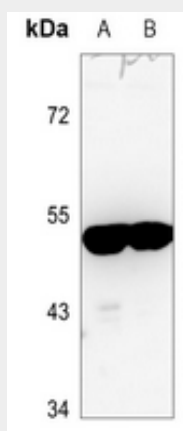
Highly expressed in skeletal muscle, placenta, kidney, lung, liver, blood, adrenal gland, lymph node, mammary gland, thyroid, and trachea (PubMed:16269462, PubMed:21982743). Very low levels in colon, thymus, spleen, small intestine, bladder and bone marrow (PubMed:16269462). Strong expression in differentiated adipocytes compared to preadipocytes (PubMed:16269462). Detected in omental fat and subcutaneous fat tissue (PubMed:21982743)

Anti-ARRDC3 Antibody - Protocols

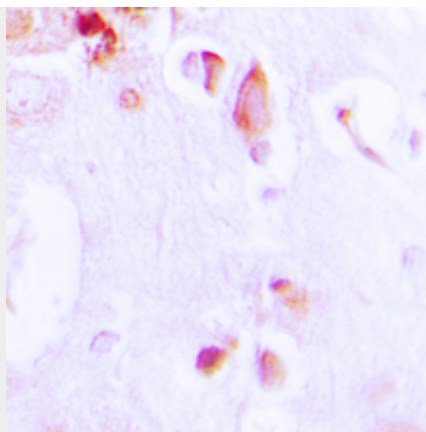
Provided below are standard protocols that you may find useful for product applications.

- [Western Blot](#)
- [Blocking Peptides](#)
- [Dot Blot](#)
- [Immunohistochemistry](#)
- [Immunofluorescence](#)
- [Immunoprecipitation](#)
- [Flow Cytometry](#)
- [Cell Culture](#)

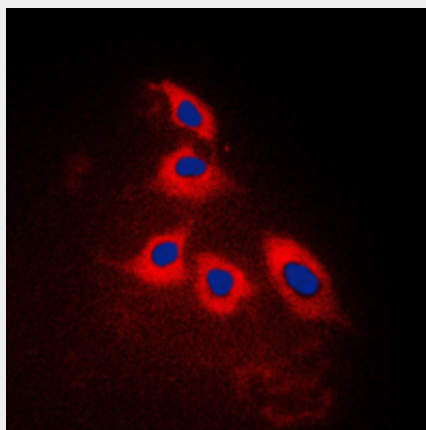
Anti-ARRDC3 Antibody - Images



Western blot analysis of ARRDC3 expression in rat liver (A), rat muscle (B) whole cell lysates.



Immunohistochemical analysis of ARRDC3 staining in human brain formalin fixed paraffin embedded tissue section. The section was pre-treated using heat mediated antigen retrieval with sodium citrate buffer (pH 6.0). The section was then incubated with the antibody at room temperature and detected using an HRP conjugated compact polymer system. DAB was used as the chromogen. The section was then counterstained with haematoxylin and mounted with DPX.



Immunofluorescent analysis of ARRDC3 staining in Jurkat cells. Formalin-fixed cells were permeabilized with 0.1% Triton X-100 in TBS for 5-10 minutes and blocked with 3% BSA-PBS for 30 minutes at room temperature. Cells were probed with the primary antibody in 3% BSA-PBS and incubated overnight at 4 °C in a humidified chamber. Cells were washed with PBST and incubated with a DyLight 594-conjugated secondary antibody (red) in PBS at room temperature in the dark. DAPI was used to stain the cell nuclei (blue).

Anti-ARRDC3 Antibody - Background

KLH-conjugated synthetic peptide encompassing a sequence within the C-term region of human ARRDC3. The exact sequence is proprietary.