

Anti-TRIB3 Antibody
Rabbit polyclonal antibody to TRIB3
Catalog # AP59861**Specification**

Anti-TRIB3 Antibody - Product Information

Application	WB
Primary Accession	Q96RU7
Other Accession	Q8K4K2
Reactivity	Human, Mouse, Rat
Host	Rabbit
Clonality	Polyclonal
Calculated MW	39578

Anti-TRIB3 Antibody - Additional Information**Gene ID** 57761**Other Names**

C20orf97; NIPK; SKIP3; TRB3; Tribbles homolog 3; TRB-3; Neuronal cell death-inducible putative kinase; SINK; p65-interacting inhibitor of NF-kappa-B

Target/Specificity

Recognizes endogenous levels of TRIB3 protein.

Dilution

WB~~WB (1/500 - 1/1000)

Format

Liquid in 0.42% Potassium phosphate, 0.87% Sodium chloride, pH 7.3, 30% glycerol, and 0.09% (W/V) sodium azide.

Storage

Store at -20 °C. Stable for 12 months from date of receipt

Anti-TRIB3 Antibody - Protein Information**Name** TRIB3**Synonyms** C20orf97, NIPK, SKIP3, TRB3**Function**

Inactive protein kinase which acts as a regulator of the integrated stress response (ISR), a process for adaptation to various stress (PubMed: [15781252](http://www.uniprot.org/citations/15781252), PubMed: [15775988](http://www.uniprot.org/citations/15775988)). Inhibits the transcriptional activity of DDIT3/CHOP and is involved in DDIT3/CHOP-dependent cell death during ER stress (PubMed: [15781252](http://www.uniprot.org/citations/15781252), PubMed: [15775988](http://www.uniprot.org/citations/15775988)).

href="http://www.uniprot.org/citations/15775988" target="_blank">15775988). May play a role in programmed neuronal cell death but does not appear to affect non-neuronal cells (PubMed:15781252, PubMed:15775988). Acts as a negative feedback regulator of the ATF4-dependent transcription during the ISR: while TRIB3 expression is promoted by ATF4, TRIB3 protein interacts with ATF4 and inhibits ATF4 transcription activity (By similarity). Disrupts insulin signaling by binding directly to Akt kinases and blocking their activation (By similarity). May bind directly to and mask the 'Thr-308' phosphorylation site in AKT1 (By similarity). Interacts with the NF-kappa-B transactivator p65 RELA and inhibits its phosphorylation and thus its transcriptional activation activity (PubMed:12736262). Interacts with MAPK kinases and regulates activation of MAP kinases (PubMed:15299019). Can inhibit APOBEC3A editing of nuclear DNA (PubMed:22977230).

Cellular Location

Nucleus.

Tissue Location

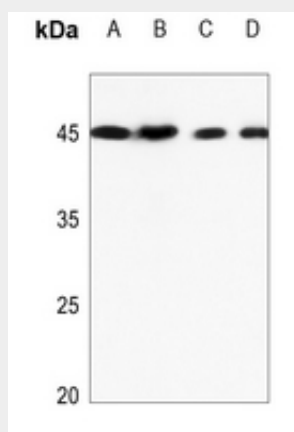
Highest expression in liver, pancreas, peripheral blood leukocytes and bone marrow. Also highly expressed in a number of primary lung, colon and breast tumors. Expressed in spleen, thymus, and prostate and is undetectable in other examined tissues, including testis, ovary, small intestine, colon, leukocyte, heart, brain, placenta, lung, skeletal muscle, and kidney

Anti-TRIB3 Antibody - Protocols

Provided below are standard protocols that you may find useful for product applications.

- [Western Blot](#)
- [Blocking Peptides](#)
- [Dot Blot](#)
- [Immunohistochemistry](#)
- [Immunofluorescence](#)
- [Immunoprecipitation](#)
- [Flow Cytometry](#)
- [Cell Culture](#)

Anti-TRIB3 Antibody - Images



Western blot analysis of TRIB3 expression in HEK293T (A), A549 (B), H1688 (C), mouse lung (D) whole cell lysates.

Anti-TRIB3 Antibody - Background

KLH-conjugated synthetic peptide encompassing a sequence within the N-term region of human TRIB3. The exact sequence is proprietary.