

Anti-ZP4 Antibody
Rabbit polyclonal antibody to ZP4
Catalog # AP59862**Specification**

Anti-ZP4 Antibody - Product Information

Application	WB
Primary Accession	Q12836
Reactivity	Human, Mouse, Rat, Monkey
Host	Rabbit
Clonality	Polyclonal
Calculated MW	59400

Anti-ZP4 Antibody - Additional Information**Gene ID** 57829**Other Names**

ZPB; Zona pellucida sperm-binding protein 4; Zona pellucida glycoprotein 4; Zp-4; Zona pellucida protein B

Target/Specificity

KLH-conjugated synthetic peptide encompassing a sequence within the center region of human ZP4. The exact sequence is proprietary.

Dilution

WB~~WB (1/500 - 1/1000)

Format

Liquid in 0.42% Potassium phosphate, 0.87% Sodium chloride, pH 7.3, 30% glycerol, and 0.09% (W/V) sodium azide.

Storage

Store at -20 °C. Stable for 12 months from date of receipt

Anti-ZP4 Antibody - Protein Information**Name** ZP4**Synonyms** ZPB**Function**

Component of the zona pellucida, an extracellular matrix surrounding oocytes which mediates sperm binding, induction of the acrosome reaction and prevents post-fertilization polyspermy. The zona pellucida is composed of 3 to 4 glycoproteins, ZP1, ZP2, ZP3, and ZP4. ZP4 may act as a sperm receptor.

Cellular Location

[Processed zona pellucida sperm-binding protein 4]: Zona pellucida
{ECO:0000250|UniProtKB:Q00193}

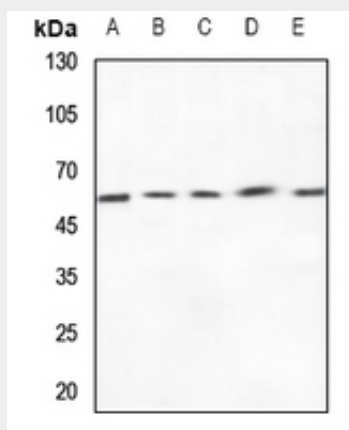
Tissue Location

Expressed in oocytes.

Anti-ZP4 Antibody - Protocols

Provided below are standard protocols that you may find useful for product applications.

- [Western Blot](#)
- [Blocking Peptides](#)
- [Dot Blot](#)
- [Immunohistochemistry](#)
- [Immunofluorescence](#)
- [Immunoprecipitation](#)
- [Flow Cytometry](#)
- [Cell Culture](#)

Anti-ZP4 Antibody - Images

Western blot analysis of ZP4 expression in HEK293T (A), H1688 (B), mouse testis (C), mouse spleen (D), rat testis (E) whole cell lysates.

Anti-ZP4 Antibody - Background

KLH-conjugated synthetic peptide encompassing a sequence within the center region of human ZP4. The exact sequence is proprietary.