

Anti-CD318 Antibody
Rabbit polyclonal antibody to CD318
Catalog # AP59868**Specification**

Anti-CD318 Antibody - Product Information

Application	WB
Primary Accession	Q9H5V8
Other Accession	Q5U462
Reactivity	Human, Mouse, Rat
Host	Rabbit
Clonality	Polyclonal
Calculated MW	92932

Anti-CD318 Antibody - Additional Information**Gene ID** 64866**Other Names**

TRASK; CUB domain-containing protein 1; Membrane glycoprotein gp140; Subtractive immunization M plus HEp3-associated 135 kDa protein; SIMA135; Transmembrane and associated with src kinases; CD318

Target/Specificity

Recognizes endogenous levels of CD318 protein.

Dilution

WB~~WB (1/500 - 1/1000)

Format

Liquid in 0.42% Potassium phosphate, 0.87% Sodium chloride, pH 7.3, 30% glycerol, and 0.09% (W/V) sodium azide.

Storage

Store at -20 °C. Stable for 12 months from date of receipt

Anti-CD318 Antibody - Protein Information**Name** CDCP1**Synonyms** TRASK**Function**

May be involved in cell adhesion and cell matrix association. May play a role in the regulation of anchorage versus migration or proliferation versus differentiation via its phosphorylation. May be a novel marker for leukemia diagnosis and for immature hematopoietic stem cell subsets. Belongs to the tetraspanin web involved in tumor progression and metastasis.

Cellular Location

[Isoform 1]: Cell membrane; Single- pass membrane protein. Note=Shedding may also lead to a soluble peptide

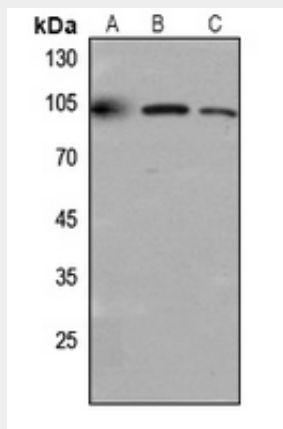
Tissue Location

Highly expressed in mitotic cells with low expression during interphase. Detected at highest levels in skeletal muscle and colon with lower levels in kidney, small intestine, placenta and lung. Up-regulated in a number of human tumor cell lines, as well as in colorectal cancer, breast carcinoma and lung cancer. Also expressed in cells with phenotypes reminiscent of mesenchymal stem cells and neural stem cells.

Anti-CD318 Antibody - Protocols

Provided below are standard protocols that you may find useful for product applications.

- [Western Blot](#)
- [Blocking Peptides](#)
- [Dot Blot](#)
- [Immunohistochemistry](#)
- [Immunofluorescence](#)
- [Immunoprecipitation](#)
- [Flow Cytometry](#)
- [Cell Culture](#)

Anti-CD318 Antibody - Images

Western blot analysis of CD318 expression in Hela (A), mouse kidney (B), rat lung (C) whole cell lysates.

Anti-CD318 Antibody - Background

KLH-conjugated synthetic peptide encompassing a sequence within the C-term region of human CD318. The exact sequence is proprietary.