

**Anti-MRPL14 Antibody**  
**Rabbit polyclonal antibody to MRPL14**  
**Catalog # AP59869****Specification**

---

**Anti-MRPL14 Antibody - Product Information**

Application	WB, IH
Primary Accession	<a href="#">O6P1L8</a>
Other Accession	<a href="#">O9D1I6</a>
Reactivity	Human, Mouse, Rat
Host	Rabbit
Clonality	Polyclonal
Calculated MW	15948

**Anti-MRPL14 Antibody - Additional Information****Gene ID** 64928**Other Names**

MRPL32; RPML32; 39S ribosomal protein L14 mitochondrial; L14mt; MRP-L14; 39S ribosomal protein L32 mitochondrial; L32mt; MRP-L32

**Target/Specificity**

Recognizes endogenous levels of MRPL14 protein.

**Dilution**WB~~WB (1/500 - 1/1000), IH (1/100 - 1/200), IP (1/10 - 1/100)  
IH~~WB (1/500 - 1/1000), IH (1/100 - 1/200), IP (1/10 - 1/100)**Format**

Liquid in 0.42% Potassium phosphate, 0.87% Sodium chloride, pH 7.3, 30% glycerol, and 0.09% (W/V) sodium azide.

**Storage**

Store at -20 °C. Stable for 12 months from date of receipt

**Anti-MRPL14 Antibody - Protein Information****Name** MRPL14**Synonyms** MRPL32, RPML32**Function**

Forms part of 2 intersubunit bridges in the assembled ribosome. Upon binding to MALSU1 intersubunit bridge formation is blocked, preventing ribosome formation and repressing translation (Probable).

**Cellular Location**

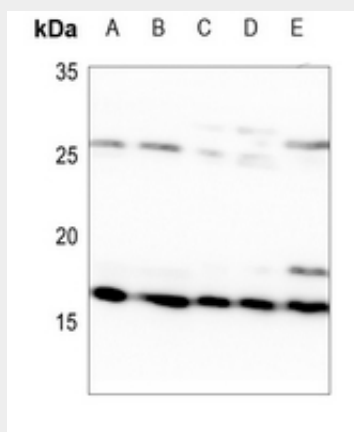
Mitochondrion

### Anti-MRPL14 Antibody - Protocols

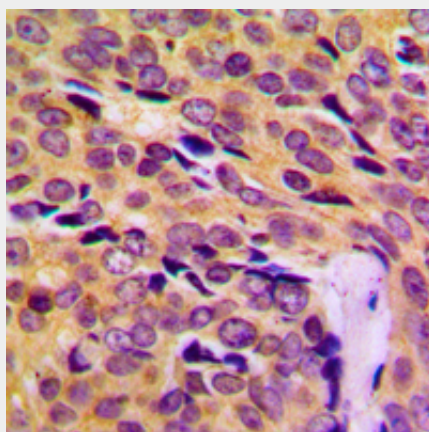
Provided below are standard protocols that you may find useful for product applications.

- [Western Blot](#)
- [Blocking Peptides](#)
- [Dot Blot](#)
- [Immunohistochemistry](#)
- [Immunofluorescence](#)
- [Immunoprecipitation](#)
- [Flow Cytometry](#)
- [Cell Culture](#)

### Anti-MRPL14 Antibody - Images



Western blot analysis of MRPL14 expression in A549 (A), H446 (B), mouse kidney (C), mouse lung (D), rat kidney (E) whole cell lysates.



Immunohistochemical analysis of MRPL14 staining in human breast cancer formalin fixed paraffin embedded tissue section. The section was pre-treated using heat mediated antigen retrieval with sodium citrate buffer (pH 6.0). The section was then incubated with the antibody at room temperature and detected using an HRP conjugated compact polymer system. DAB was used as the chromogen. The section was then counterstained with haematoxylin and mounted with DPX.

### Anti-MRPL14 Antibody - Background

KLH-conjugated synthetic peptide encompassing a sequence within the C-term region of human MRPL14. The exact sequence is proprietary.