

**Anti-ELOVL6 Antibody**  
**Rabbit polyclonal antibody to ELOVL6**  
**Catalog # AP59871****Specification**

---

**Anti-ELOVL6 Antibody - Product Information**

Application	WB, IP
Primary Accession	<a href="#">O9H5J4</a>
Other Accession	<a href="#">O920L5</a>
Reactivity	Human, Mouse, Rat, Chicken
Host	Rabbit
Clonality	Polyclonal
Calculated MW	31376

**Anti-ELOVL6 Antibody - Additional Information****Gene ID** 79071**Other Names**

FACE; LCE; Elongation of very long chain fatty acids protein 6; 3-keto acyl-CoA synthase ELOVL6; ELOVL fatty acid elongase 6; ELOVL FA elongase 6; Fatty acid elongase 2; hELO2; Fatty acyl-CoA elongase; Long-chain fatty-acyl elongase; Very-long-chain 3-oxoacyl-CoA synthase 6

**Target/Specificity**

KLH-conjugated synthetic peptide encompassing a sequence within the center region of human ELOVL6. The exact sequence is proprietary.

**Dilution**

WB~~WB (1/500 - 1/1000), IP (1/10 - 1/100)  
IP~~N/A

**Format**

Liquid in 0.42% Potassium phosphate, 0.87% Sodium chloride, pH 7.3, 30% glycerol, and 0.09% (W/V) sodium azide.

**Storage**

Store at -20 °C. Stable for 12 months from date of receipt

**Anti-ELOVL6 Antibody - Protein Information****Name** ELOVL6 {ECO:0000255|HAMAP-Rule:MF\_03206}**Synonyms** FACE, LCE**Function**

Catalyzes the first and rate-limiting reaction of the four reactions that constitute the long-chain fatty acids elongation cycle. This endoplasmic reticulum-bound enzymatic process allows the addition of 2 carbons to the chain of long- and very long-chain fatty acids (VLCFAs) per cycle.

Condensing enzyme that elongates fatty acids with 12, 14 and 16 carbons with higher activity toward C16:0 acyl-CoAs. Catalyzes the synthesis of unsaturated C16 long chain fatty acids and, to a lesser extent, C18:0 and those with low desaturation degree. May participate in the production of saturated and monounsaturated VLCFAs of different chain lengths that are involved in multiple biological processes as precursors of membrane lipids and lipid mediators.

#### Cellular Location

Endoplasmic reticulum membrane {ECO:0000255|HAMAP-Rule:MF\_03206, ECO:0000269|PubMed:20937905}; Multi-pass membrane protein {ECO:0000255|HAMAP-Rule:MF\_03206}

#### Tissue Location

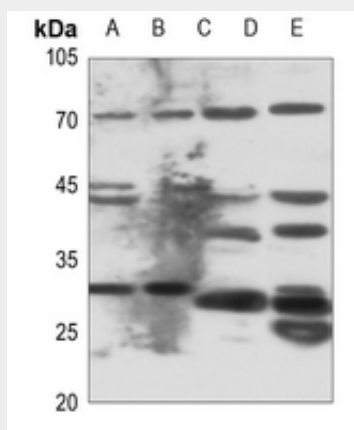
Ubiquitous..

### Anti-ELOVL6 Antibody - Protocols

Provided below are standard protocols that you may find useful for product applications.

- [Western Blot](#)
- [Blocking Peptides](#)
- [Dot Blot](#)
- [Immunohistochemistry](#)
- [Immunofluorescence](#)
- [Immunoprecipitation](#)
- [Flow Cytometry](#)
- [Cell Culture](#)

### Anti-ELOVL6 Antibody - Images



Western blot analysis of ELOVL6 expression in Hela (A), A549 (B), mouse liver (C), rat liver (D) whole cell lysates.

### Anti-ELOVL6 Antibody - Background

KLH-conjugated synthetic peptide encompassing a sequence within the center region of human ELOVL6. The exact sequence is proprietary.