

Anti-Rabaptin 5 beta Antibody
Rabbit polyclonal antibody to Rabaptin 5 beta
Catalog # AP59874**Specification**

Anti-Rabaptin 5 beta Antibody - Product Information

Application	WB, IP, IHC
Primary Accession	O9H5N1
Reactivity	Human, Mouse, Rat, Monkey
Host	Rabbit
Clonality	Polyclonal
Calculated MW	63543

Anti-Rabaptin 5 beta Antibody - Additional Information**Gene ID** 79874**Other Names**

RABPT5B; Rab GTPase-binding effector protein 2; Rabaptin-5beta

Target/Specificity

Recognizes endogenous levels of Rabaptin 5 beta protein.

Dilution

WB~~WB (1/500 - 1/1000), IH (1/100 - 1/200), IP (1/10 - 1/100)

IP~~N/A

IHC~~1:100~500

Format

Liquid in 0.42% Potassium phosphate, 0.87% Sodium chloride, pH 7.3, 30% glycerol, and 0.09% (W/V) sodium azide.

Storage

Store at -20 °C. Stable for 12 months from date of receipt

Anti-Rabaptin 5 beta Antibody - Protein Information**Name** RABEP2**Synonyms** RABPT5B**Function**

Plays a role in membrane trafficking and in homotypic early endosome fusion (PubMed:9524116). Participates in arteriogenesis by regulating vascular endothelial growth factor receptor 2/VEGFR2 cell surface expression and endosomal trafficking (PubMed:29425100). By interacting with SDCCAG8, localizes to centrosomes and plays a critical role in ciliogenesis

(PubMed: [27224062](http://www.uniprot.org/citations/27224062)).

Cellular Location

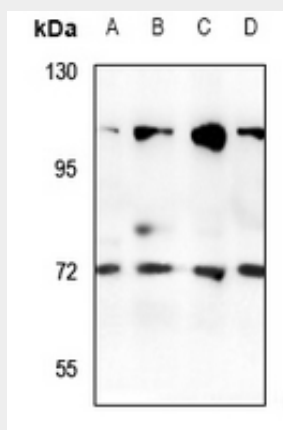
Cytoplasm. Early endosome. Cytoplasm, cytoskeleton, microtubule organizing center, centrosome. Cytoplasm, cytoskeleton, cilium basal body

Anti-Rabaptin 5 beta Antibody - Protocols

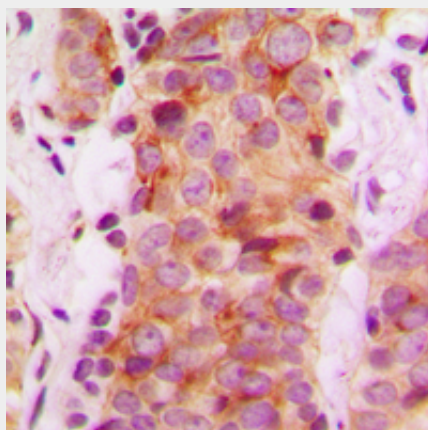
Provided below are standard protocols that you may find useful for product applications.

- [Western Blot](#)
- [Blocking Peptides](#)
- [Dot Blot](#)
- [Immunohistochemistry](#)
- [Immunofluorescence](#)
- [Immunoprecipitation](#)
- [Flow Cytometry](#)
- [Cell Culture](#)

Anti-Rabaptin 5 beta Antibody - Images



Western blot analysis of Rabaptin 5 beta expression in BV2 (A), PC12 (B), A549 (C), LOVO (D) whole cell lysates.



Immunohistochemical analysis of Rabaptin 5 beta staining in human breast cancer formalin fixed paraffin embedded tissue section. The section was pre-treated using heat mediated antigen

retrieval with sodium citrate buffer (pH 6.0). The section was then incubated with the antibody at room temperature and detected using an HRP conjugated compact polymer system. DAB was used as the chromogen. The section was then counterstained with haematoxylin and mounted with DPX.

Anti-Rabaptin 5 beta Antibody - Background

KLH-conjugated synthetic peptide encompassing a sequence within the center region of human Rabaptin 5 beta. The exact sequence is proprietary.