

Anti-DUSP16 Antibody
Rabbit polyclonal antibody to DUSP16
Catalog # AP59878**Specification**

Anti-DUSP16 Antibody - Product Information

Application	WB, IH, IF
Primary Accession	Q9BY84
Reactivity	Human, Mouse, Rat, Monkey
Host	Rabbit
Clonality	Polyclonal
Calculated MW	73102

Anti-DUSP16 Antibody - Additional Information**Gene ID** 80824**Other Names**

KIAA1700; MKP7; Dual specificity protein phosphatase 16; Mitogen-activated protein kinase phosphatase 7; MAP kinase phosphatase 7; MKP-7

Target/Specificity

Recognizes endogenous levels of DUSP16 protein.

Dilution

WB~~WB (1/500 - 1/1000), IH (1/100 - 1/200), IF/IC (1/100 - 1/500)

IH~~WB (1/500 - 1/1000), IH (1/100 - 1/200), IF/IC (1/100 - 1/500)

IF~~WB (1/500 - 1/1000), IH (1/100 - 1/200), IF/IC (1/100 - 1/500)

Format

Liquid in 0.42% Potassium phosphate, 0.87% Sodium chloride, pH 7.3, 30% glycerol, and 0.09% (W/V) sodium azide.

Storage

Store at -20 °C. Stable for 12 months from date of receipt

Anti-DUSP16 Antibody - Protein Information**Name** DUSP16**Synonyms** KIAA1700, MKP7**Function**

Dual specificity protein phosphatase involved in the inactivation of MAP kinases. Dephosphorylates MAPK10 bound to ARRB2.

Cellular Location

Cytoplasm. Nucleus. Cytoplasmic vesicle. Note=After dissociation upon AGTR stimulation,

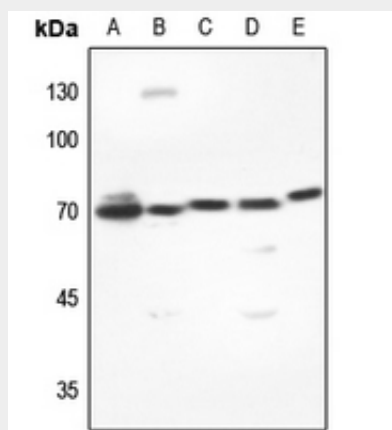
re-associates with ARRB2 on endocytic vesicles

Anti-DUSP16 Antibody - Protocols

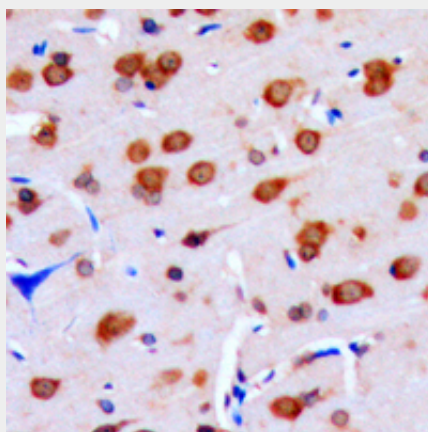
Provided below are standard protocols that you may find useful for product applications.

- [Western Blot](#)
- [Blocking Peptides](#)
- [Dot Blot](#)
- [Immunohistochemistry](#)
- [Immunofluorescence](#)
- [Immunoprecipitation](#)
- [Flow Cytometry](#)
- [Cell Culture](#)

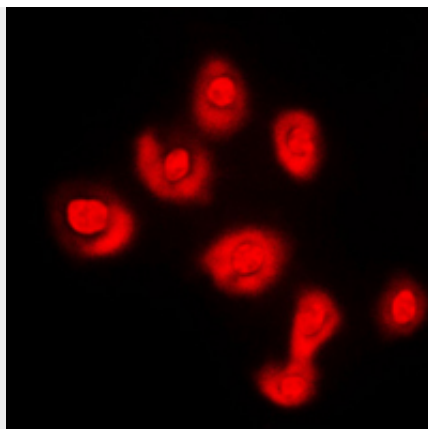
Anti-DUSP16 Antibody - Images



Western blot analysis of DUSP16 expression in H1688 (A), mouse kidney (B), mouse brain (C), rat kidney (D), rat brain (E) whole cell lysates.



Immunohistochemical analysis of DUSP16 staining in human brain formalin fixed paraffin embedded tissue section. The section was pre-treated using heat mediated antigen retrieval with sodium citrate buffer (pH 6.0). The section was then incubated with the antibody at room temperature and detected using an HRP conjugated compact polymer system. DAB was used as the chromogen. The section was then counterstained with haematoxylin and mounted with DPX.



Immunofluorescent analysis of DUSP16 staining in COLO205 cells. Formalin-fixed cells were permeabilized with 0.1% Triton X-100 in TBS for 5-10 minutes and blocked with 3% BSA-PBS for 30 minutes at room temperature. Cells were probed with the primary antibody in 3% BSA-PBS and incubated overnight at 4 °C in a humidified chamber. Cells were washed with PBST and incubated with a DyLight 594-conjugated secondary antibody (red) in PBS at room temperature in the dark.

Anti-DUSP16 Antibody - Background

KLH-conjugated synthetic peptide encompassing a sequence within the C-term region of human DUSP16. The exact sequence is proprietary.