

Anti-RAB11FIP4 Antibody
Rabbit polyclonal antibody to RAB11FIP4
Catalog # AP59882**Specification**

Anti-RAB11FIP4 Antibody - Product Information

Application	WB, IP
Primary Accession	Q86YS3
Other Accession	Q8BQP8
Reactivity	Human, Mouse, Rat, Monkey
Host	Rabbit
Clonality	Polyclonal
Calculated MW	71928

Anti-RAB11FIP4 Antibody - Additional Information**Gene ID** 84440**Other Names**

ARFO2; KIAA1821; Rab11 family-interacting protein 4; FIP4-Rab11; Rab11-FIP4; Arfophilin-2

Target/Specificity

KLH-conjugated synthetic peptide encompassing a sequence within the center region of human RAB11FIP4. The exact sequence is proprietary.

Dilution

WB~~WB (1/500 - 1/1000), IP (1/10 - 1/100)

IP~~N/A

Format

Liquid in 0.42% Potassium phosphate, 0.87% Sodium chloride, pH 7.3, 30% glycerol, and 0.09% (W/V) sodium azide.

Storage

Store at -20 °C. Stable for 12 months from date of receipt

Anti-RAB11FIP4 Antibody - Protein Information**Name** RAB11FIP4**Synonyms** ARFO2, KIAA1821**Function**

Acts as a regulator of endocytic traffic by participating in membrane delivery. Required for the abscission step in cytokinesis, possibly by acting as an 'address tag' delivering recycling endosome membranes to the cleavage furrow during late cytokinesis. In case of infection by HCMV (human cytomegalovirus), may participate in egress of the virus out of nucleus; this function is independent of ARF6.

Cellular Location

Endosome. Cytoplasm, cytoskeleton, spindle Cytoplasm, cytoskeleton, microtubule organizing center, centrosome. Recycling endosome membrane; Peripheral membrane protein. Cleavage furrow. Midbody. Cytoplasmic vesicle. Note=Recruited to the cleavage furrow and the midbody during cytokinesis

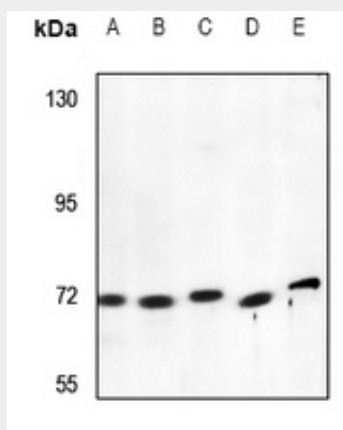
Tissue Location

Present at high level in testis (at protein level). Weakly expressed in other tissues.

Anti-RAB11FIP4 Antibody - Protocols

Provided below are standard protocols that you may find useful for product applications.

- [Western Blot](#)
- [Blocking Peptides](#)
- [Dot Blot](#)
- [Immunohistochemistry](#)
- [Immunofluorescence](#)
- [Immunoprecipitation](#)
- [Flow Cytometry](#)
- [Cell Culture](#)

Anti-RAB11FIP4 Antibody - Images

Western blot analysis of RAB11FIP4 expression in rat testis (A), mouse testis (B), PC3 (C), LOVO (D), A549 (E) whole cell lysates.

Anti-RAB11FIP4 Antibody - Background

KLH-conjugated synthetic peptide encompassing a sequence within the center region of human RAB11FIP4. The exact sequence is proprietary.