

Anti-ZC3H8 Antibody
Rabbit polyclonal antibody to ZC3H8
Catalog # AP59883**Specification**

Anti-ZC3H8 Antibody - Product Information

Application	WB, IHC
Primary Accession	Q8N5P1
Other Accession	Q9JJ48
Reactivity	Human, Mouse, Rat, Monkey
Host	Rabbit
Clonality	Polyclonal
Calculated MW	33576

Anti-ZC3H8 Antibody - Additional Information**Gene ID** 84524**Other Names**

ZC3HDC8; Zinc finger CCCH domain-containing protein 8

Target/Specificity

KLH-conjugated synthetic peptide encompassing a sequence within the center region of human ZC3H8. The exact sequence is proprietary.

Dilution

WB~~WB (1/500 - 1/1000), IH (1/100 - 1/200)

IHC~~1:100~500

Format

Liquid in 0.42% Potassium phosphate, 0.87% Sodium chloride, pH 7.3, 30% glycerol, and 0.09% (W/V) sodium azide.

Storage

Store at -20 °C. Stable for 12 months from date of receipt

Anti-ZC3H8 Antibody - Protein Information**Name** ZC3H8**Synonyms** ZC3HDC8**Function**

Acts as a transcriptional repressor of the GATA3 promoter. Sequence-specific DNA-binding factor that binds to the 5'-AGGTCTC-3' sequence within the negative cis-acting element intronic regulatory region (IRR) of the GATA3 gene (By similarity). Component of the little elongation complex (LEC), a complex required to regulate small nuclear RNA (snRNA) gene transcription by RNA polymerase II and III (PubMed:<a href="http://www.uniprot.org/citations/23932780"

target="_blank">23932780). Induces thymocyte apoptosis when overexpressed, which may indicate a role in regulation of thymocyte homeostasis.

Cellular Location

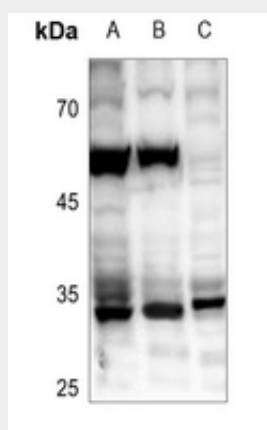
Nucleus. Note=Colocalizes with coilin in subnuclear cajal and histone locus bodies. Translocates in the LEC complex to cajal and histone locus bodies at snRNA genes in a ICE1-dependent manner. Associates to transcriptionally active chromatin at snRNA genes

Anti-ZC3H8 Antibody - Protocols

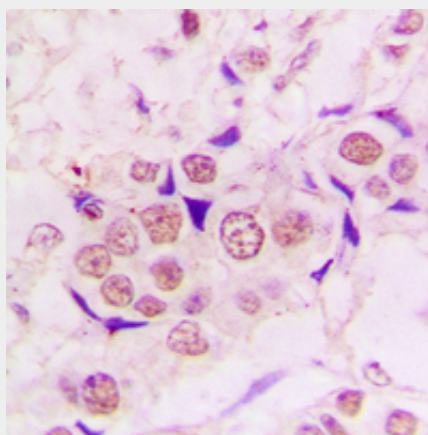
Provided below are standard protocols that you may find useful for product applications.

- [Western Blot](#)
- [Blocking Peptides](#)
- [Dot Blot](#)
- [Immunohistochemistry](#)
- [Immunofluorescence](#)
- [Immunoprecipitation](#)
- [Flow Cytometry](#)
- [Cell Culture](#)

Anti-ZC3H8 Antibody - Images



Western blot analysis of ZC3H8 expression in EC9706 (A), HCT116 (B), C6 (C) whole cell lysates.



Immunohistochemical analysis of ZC3H8 staining in human lung cancer formalin fixed paraffin

embedded tissue section. The section was pre-treated using heat mediated antigen retrieval with sodium citrate buffer (pH 6.0). The section was then incubated with the antibody at room temperature and detected using an HRP conjugated compact polymer system. DAB was used as the chromogen. The section was then counterstained with haematoxylin and mounted with DPX.

Anti-ZC3H8 Antibody - Background

KLH-conjugated synthetic peptide encompassing a sequence within the center region of human ZC3H8. The exact sequence is proprietary.