

Anti-ARMC6 Antibody
Rabbit polyclonal antibody to ARMC6
Catalog # AP59886**Specification**

Anti-ARMC6 Antibody - Product Information

Application	WB, IP, IF/IC
Primary Accession	Q6NXE6
Reactivity	Human
Host	Rabbit
Clonality	Polyclonal
Calculated MW	54142

Anti-ARMC6 Antibody - Additional Information**Gene ID** 93436**Other Names**

Armadillo repeat-containing protein 6

Target/Specificity

KLH-conjugated synthetic peptide encompassing a sequence within the C-term region of human ARMC6. The exact sequence is proprietary.

Dilution

WB~~WB (1/500 - 1/1000), IF/IC (1/100 - 1/500), IP (1/10 - 1/100)

IP~~N/A

IF/IC~~N/A

Format

Liquid in 0.42% Potassium phosphate, 0.87% Sodium chloride, pH 7.3, 30% glycerol, and 0.09% (W/V) sodium azide.

Storage

Store at -20 °C. Stable for 12 months from date of receipt

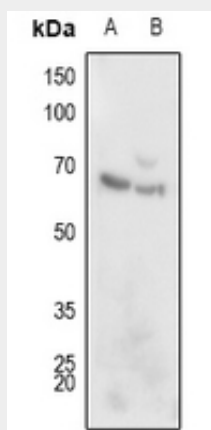
Anti-ARMC6 Antibody - Protein Information**Name** ARMC6**Anti-ARMC6 Antibody - Protocols**

Provided below are standard protocols that you may find useful for product applications.

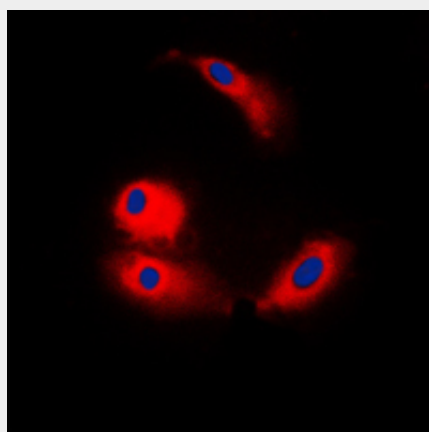
- [Western Blot](#)
- [Blocking Peptides](#)

- [Dot Blot](#)
- [Immunohistochemistry](#)
- [Immunofluorescence](#)
- [Immunoprecipitation](#)
- [Flow Cytometry](#)
- [Cell Culture](#)

Anti-ARMC6 Antibody - Images



Western blot analysis of ARMC6 expression in HEK293T (A), HeLa (B) whole cell lysates.



Immunofluorescent analysis of ARMC6 staining in COLO205 cells. Formalin-fixed cells were permeabilized with 0.1% Triton X-100 in TBS for 5-10 minutes and blocked with 3% BSA-PBS for 30 minutes at room temperature. Cells were probed with the primary antibody in 3% BSA-PBS and incubated overnight at 4 °C in a humidified chamber. Cells were washed with PBST and incubated with a DyLight 594-conjugated secondary antibody (red) in PBS at room temperature in the dark. DAPI was used to stain the cell nuclei (blue).

Anti-ARMC6 Antibody - Background

KLH-conjugated synthetic peptide encompassing a sequence within the C-term region of human ARMC6. The exact sequence is proprietary.