

**Anti-Caspase 12 Antibody**  
**Rabbit polyclonal antibody to Caspase 12**  
**Catalog # AP59889****Specification**

---

**Anti-Caspase 12 Antibody - Product Information**

Application	WB, IHC
Primary Accession	<a href="#">Q6UXS9</a>
Other Accession	<a href="#">O08736</a>
Reactivity	Human, Mouse, Rat
Host	Rabbit
Clonality	Polyclonal
Calculated MW	38907

**Anti-Caspase 12 Antibody - Additional Information****Gene ID** 100506742**Other Names**

Inactive caspase-12; CASP-12

**Target/Specificity**

Recognizes endogenous levels of Caspase 12 protein.

**Dilution**

WB~~WB (1/500 - 1/1000), IH (1/100 - 1/200)

IHC~~1:100~500

**Format**

Liquid in 0.42% Potassium phosphate, 0.87% Sodium chloride, pH 7.3, 30% glycerol, and 0.09% (W/V) sodium azide.

**Storage**

Store at -20 °C. Stable for 12 months from date of receipt

**Anti-Caspase 12 Antibody - Protein Information****Name** CASP12**Function**

May function as a negative regulator of inflammatory responses and innate immunity. May reduce cytokine release in response to bacterial lipopolysaccharide during infection. Reduces activation of NF-kappa-B in response to TNF (PubMed:<a href="http://www.uniprot.org/citations/15129283" target="\_blank">15129283</a>). May lack protease activity (Probable).

**Tissue Location**

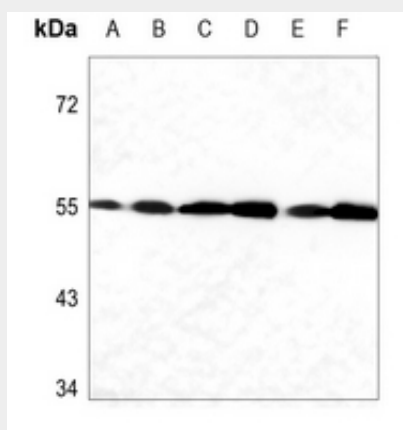
Widely expressed, with highest levels in lung.

## Anti-Caspase 12 Antibody - Protocols

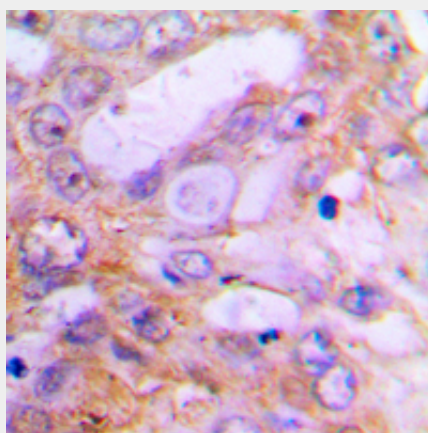
Provided below are standard protocols that you may find useful for product applications.

- [Western Blot](#)
- [Blocking Peptides](#)
- [Dot Blot](#)
- [Immunohistochemistry](#)
- [Immunofluorescence](#)
- [Immunoprecipitation](#)
- [Flow Cytometry](#)
- [Cell Culture](#)

## Anti-Caspase 12 Antibody - Images



Western blot analysis of Caspase 12 expression in HEK293T (A), A549 (B), U2OS (C), mouse brain (D), mouse spleen (E), rat brain (F) whole cell lysates.



Immunohistochemical analysis of Caspase 12 staining in human lung cancer formalin fixed paraffin embedded tissue section. The section was pre-treated using heat mediated antigen retrieval with sodium citrate buffer (pH 6.0). The section was then incubated with the antibody at room temperature and detected using an HRP conjugated compact polymer system. DAB was used as the chromogen. The section was then counterstained with haematoxylin and mounted with DPX.

## Anti-Caspase 12 Antibody - Background

KLH-conjugated synthetic peptide encompassing a sequence within the center region of human Caspase 12. The exact sequence is proprietary.