

Anti-PLK5 Antibody
Rabbit polyclonal antibody to PLK5
Catalog # AP59890**Specification**

Anti-PLK5 Antibody - Product Information

Application	WB, IP
Primary Accession	Q496M5
Reactivity	Human, Rat
Host	Rabbit
Clonality	Polyclonal
Calculated MW	36329

Anti-PLK5 Antibody - Additional Information**Gene ID** 126520**Other Names**

PLK5P; Inactive serine/threonine-protein kinase PLK5; Polo-like kinase 5; PLK-5

Target/Specificity

Recognizes endogenous levels of PLK5 protein.

Dilution

WB~~WB (1/500 - 1/1000), IP (1/10 - 1/100)

IP~~N/A

Format

Liquid in 0.42% Potassium phosphate, 0.87% Sodium chloride, pH 7.3, 30% glycerol, and 0.09% (W/V) sodium azide.

Storage

Store at -20 °C. Stable for 12 months from date of receipt

Anti-PLK5 Antibody - Protein Information**Name** PLK5**Synonyms** PLK5P**Function**

Inactive serine/threonine-protein kinase that plays a role in cell cycle progression and neuronal differentiation.

Cellular Location

Nucleus, nucleolus. Cytoplasm

Tissue Location

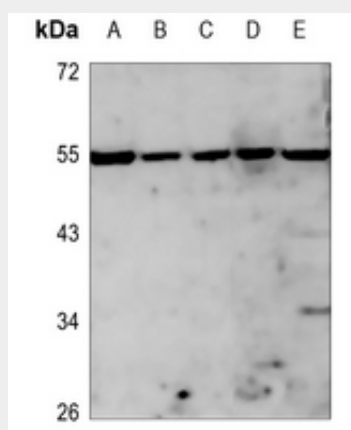
Expressed in the brain, neurons and glial cells. Also expressed in highly differentiated cells, such as the serous acini in the parotid gland, distal and proximal tubules of the kidney, tubules of the seminal gland, Kupffer cells and some hepatocytes in the liver, and some cells in the germinal center of lymph nodes (at protein level).

Anti-PLK5 Antibody - Protocols

Provided below are standard protocols that you may find useful for product applications.

- [Western Blot](#)
- [Blocking Peptides](#)
- [Dot Blot](#)
- [Immunohistochemistry](#)
- [Immunofluorescence](#)
- [Immunoprecipitation](#)
- [Flow Cytometry](#)
- [Cell Culture](#)

Anti-PLK5 Antibody - Images



Western blot analysis of PLK5 expression in HEK293T (A), H1688 (B), H446 (C), rat testis (D), rat muscle (E) whole cell lysates.

Anti-PLK5 Antibody - Background

KLH-conjugated synthetic peptide encompassing a sequence within the center region of human PLK5. The exact sequence is proprietary.