

Anti-CD200R Antibody
Rabbit polyclonal antibody to CD200R
Catalog # AP59895**Specification**

Anti-CD200R Antibody - Product Information

Application	WB
Primary Accession	Q8TD46
Reactivity	Human, Mouse, Rat
Host	Rabbit
Clonality	Polyclonal
Calculated MW	39041

Anti-CD200R Antibody - Additional Information**Gene ID** 131450**Other Names**

CD200R; CRTR2; MOX2R; OX2R; Cell surface glycoprotein CD200 receptor 1; CD200 cell surface glycoprotein receptor; Cell surface glycoprotein OX2 receptor 1

Target/Specificity

Recognizes endogenous levels of CD200R protein.

Dilution

WB~~WB (1/500 - 1/1000)

Format

Liquid in 0.42% Potassium phosphate, 0.87% Sodium chloride, pH 7.3, 30% glycerol, and 0.09% (W/V) sodium azide.

Storage

Store at -20 °C. Stable for 12 months from date of receipt

Anti-CD200R Antibody - Protein Information**Name** CD200R1**Synonyms** CD200R, CRTR2, MOX2R, OX2R**Function**

Inhibitory receptor for the CD200/OX2 cell surface glycoprotein. Limits inflammation by inhibiting the expression of pro- inflammatory molecules including TNF-alpha, interferons, and inducible nitric oxide synthase (iNOS) in response to selected stimuli. Also binds to HHV-8 K14 viral CD200 homolog with identical affinity and kinetics as the host CD200.

Cellular Location

[Isoform 1]: Cell membrane; Single-pass type I membrane protein [Isoform 2]: Secreted.

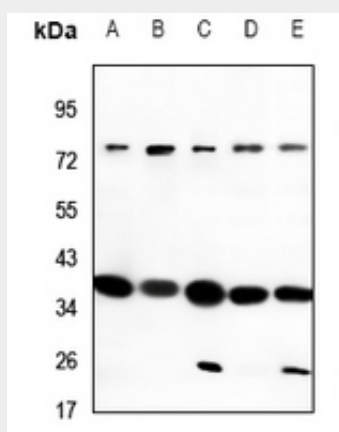
Tissue Location

Expressed in granulocytes, monocytes, most T-cells, neutrophils, basophils and a subset of NK, NKT and B-cells (at protein level). Expressed in bone marrow, lymph nodes, spleen, lung, liver, spinal cord, kidney. Expressed in monocyte-derived dendritic and mast cells.

Anti-CD200R Antibody - Protocols

Provided below are standard protocols that you may find useful for product applications.

- [Western Blot](#)
- [Blocking Peptides](#)
- [Dot Blot](#)
- [Immunohistochemistry](#)
- [Immunofluorescence](#)
- [Immunoprecipitation](#)
- [Flow Cytometry](#)
- [Cell Culture](#)

Anti-CD200R Antibody - Images

Western blot analysis of CD200R expression in AML12 (A), PC12 (B), HEK293T (C), A549 (D), LO2 (E) whole cell lysates.

Anti-CD200R Antibody - Background

KLH-conjugated synthetic peptide encompassing a sequence within the C-term region of human CD200R. The exact sequence is proprietary.