

Anti-SYNE3 Antibody
Rabbit polyclonal antibody to SYNE3
Catalog # AP59899**Specification**

Anti-SYNE3 Antibody - Product Information

Application	WB, IF/IC
Primary Accession	O6ZMZ3
Other Accession	Q4FZC9
Reactivity	Human, Mouse, Rat
Host	Rabbit
Clonality	Polyclonal
Calculated MW	112216

Anti-SYNE3 Antibody - Additional Information**Gene ID** 161176**Other Names**

C14orf49; Nesprin-3; Nuclear envelope spectrin repeat protein 3

Target/Specificity

Recognizes endogenous levels of SYNE3 protein.

Dilution

WB~~WB (1/500 - 1/1000), IF/IC (1/100 - 1/500)

IF/IC~~N/A

Format

Liquid in 0.42% Potassium phosphate, 0.87% Sodium chloride, pH 7.3, 30% glycerol, and 0.09% (W/V) sodium azide.

Storage

Store at -20 °C. Stable for 12 months from date of receipt

Anti-SYNE3 Antibody - Protein Information**Name** SYNE3 ([HGNC:19861](#))**Function**

As a component of the LINC (Linker of Nucleoskeleton and Cytoskeleton) complex involved in the connection between the nuclear lamina and the cytoskeleton. The nucleocytoplasmic interactions established by the LINC complex play an important role in the transmission of mechanical forces across the nuclear envelope and in nuclear movement and positioning. Probable anchoring protein which tethers the nucleus to the cytoskeleton by binding PLEC which can associate with the intermediate filament system. Plays a role in the regulation of aortic epithelial cell morphology, and is required for flow-induced centrosome polarization and directional migration in aortic endothelial cells.

Cellular Location

Nucleus outer membrane; Single-pass type IV membrane protein. Nucleus envelope. Rough endoplasmic reticulum

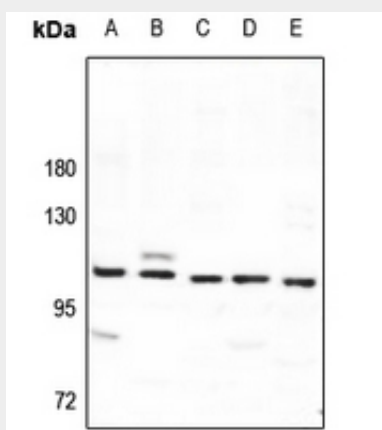
Tissue Location

Expressed in aortic endothelial cells (at protein level).

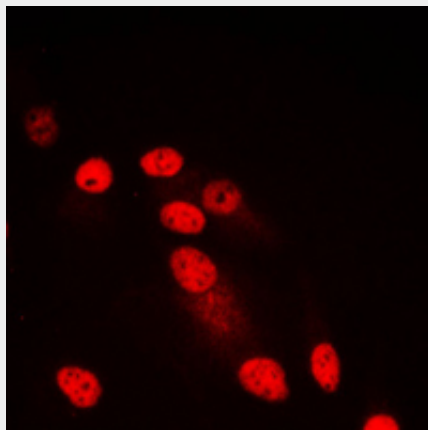
Anti-SYNE3 Antibody - Protocols

Provided below are standard protocols that you may find useful for product applications.

- [Western Blot](#)
- [Blocking Peptides](#)
- [Dot Blot](#)
- [Immunohistochemistry](#)
- [Immunofluorescence](#)
- [Immunoprecipitation](#)
- [Flow Cytometry](#)
- [Cell Culture](#)

Anti-SYNE3 Antibody - Images

Western blot analysis of SYNE3 expression in AML12 (A), H9C2 (B), A549 (C), HepG2 (D), HEK293T (E) whole cell lysates.



Immunofluorescent analysis of SYNE3 staining in HepG2 cells. Formalin-fixed cells were

permeabilized with 0.1% Triton X-100 in TBS for 5-10 minutes and blocked with 3% BSA-PBS for 30 minutes at room temperature. Cells were probed with the primary antibody in 3% BSA-PBS and incubated overnight at 4 °C in a humidified chamber. Cells were washed with PBST and incubated with a DyLight 594-conjugated secondary antibody (red) in PBS at room temperature in the dark.

Anti-SYNE3 Antibody - Background

KLH-conjugated synthetic peptide encompassing a sequence within the center region of human SYNE3. The exact sequence is proprietary.