

Anti-TRPV3 Antibody
Rabbit polyclonal antibody to TRPV3
Catalog # AP59900**Specification**

Anti-TRPV3 Antibody - Product Information

Application	WB
Primary Accession	Q8NET8
Reactivity	Human, Mouse, Rat
Host	Rabbit
Clonality	Polyclonal
Calculated MW	90636

Anti-TRPV3 Antibody - Additional Information**Gene ID** 162514**Other Names**

Transient receptor potential cation channel subfamily V member 3; TrpV3; Vanilloid receptor-like 3; VRL-3

Target/Specificity

Recognizes endogenous levels of TRPV3 protein.

Dilution

WB~~WB (1/500 - 1/1000)

Format

Liquid in 0.42% Potassium phosphate, 0.87% Sodium chloride, pH 7.3, 30% glycerol, and 0.09% (W/V) sodium azide.

Storage

Store at -20 °C. Stable for 12 months from date of receipt

Anti-TRPV3 Antibody - Protein Information**Name** TRPV3**Function**

Putative receptor-activated non-selective calcium permeant cation channel. It is activated by innocuous (warm) temperatures and shows an increased response at noxious temperatures greater than 39 degrees Celsius. Activation exhibits an outward rectification. May associate with TRPV1 and may modulate its activity. Is a negative regulator of hair growth and cycling: TRPV3-coupled signaling suppresses keratinocyte proliferation in hair follicles and induces apoptosis and premature hair follicle regression (catagen).

Cellular Location

Membrane; Multi-pass membrane protein.

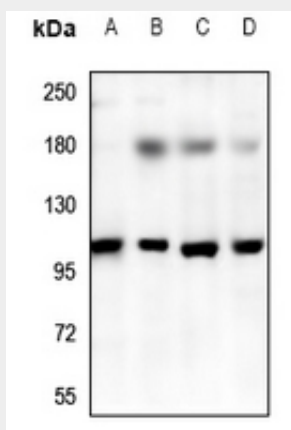
Tissue Location

Abundantly expressed in CNS. Widely expressed at low levels. Detected in dorsal root ganglion (at protein level) Expressed in the keratinocyte layers of the outer root sheath and, to lesser extent, to the matrix of the hair follicles (at protein level)

Anti-TRPV3 Antibody - Protocols

Provided below are standard protocols that you may find useful for product applications.

- [Western Blot](#)
- [Blocking Peptides](#)
- [Dot Blot](#)
- [Immunohistochemistry](#)
- [Immunofluorescence](#)
- [Immunoprecipitation](#)
- [Flow Cytometry](#)
- [Cell Culture](#)

Anti-TRPV3 Antibody - Images

Western blot analysis of TRPV3 expression in U87MG (A), MCF7 (B), C6 (C), CT26 (D) whole cell lysates.

Anti-TRPV3 Antibody - Background

KLH-conjugated synthetic peptide encompassing a sequence within the center region of human TRPV3. The exact sequence is proprietary.