

Anti-APOBEC3A Antibody
Rabbit polyclonal antibody to APOBEC3A
Catalog # AP59901**Specification**

Anti-APOBEC3A Antibody - Product Information

Application	WB
Primary Accession	P31941
Reactivity	Human, Mouse, Rat
Host	Rabbit
Clonality	Polyclonal
Calculated MW	23012

Anti-APOBEC3A Antibody - Additional Information**Gene ID** 100913187;200315**Other Names**

DNA dC->dU-editing enzyme APOBEC-3A; A3A; Phorbolin-1

Target/Specificity

Recognizes endogenous levels of APOBEC3A protein.

Dilution

WB~~WB (1/500 - 1/1000)

Format

Liquid in 0.42% Potassium phosphate, 0.87% Sodium chloride, pH 7.3, 30% glycerol, and 0.09% (W/V) sodium azide.

Storage

Store at -20 °C.Stable for 12 months from date of receipt

Anti-APOBEC3A Antibody - Protein Information**Name** APOBEC3A**Function**

DNA deaminase (cytidine deaminase) with restriction activity against viruses, foreign DNA and mobility of retrotransposons. Exhibits antiviral activity against adeno-associated virus (AAV) and human T- cell leukemia virus type 1 (HTLV-1) and may inhibit the mobility of LTR and non-LTR retrotransposons. Selectively targets single-stranded DNA and can deaminate both methylcytosine and cytosine in foreign DNA. Can induce somatic hypermutation in the nuclear and mitochondrial DNA. May also play a role in the epigenetic regulation of gene expression through the process of active DNA demethylation.

Cellular Location

Nucleus. Cytoplasm.

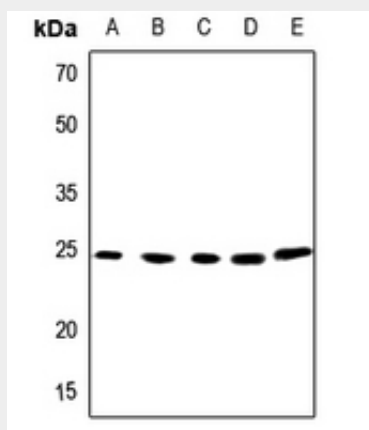
Tissue Location

Expressed in peripheral leukocytes with higher expression in CD14-positive phagocytic cells. Highly expressed in keratinocytes and in periphery blood monocytes. Also detected in non-lymphoid tissues including lung and adipose tissues. Found at high levels in colorectal adenocarcinoma, Burkitt's lymphoma and chronic myelogenous leukemia.

Anti-APOBEC3A Antibody - Protocols

Provided below are standard protocols that you may find useful for product applications.

- [Western Blot](#)
- [Blocking Peptides](#)
- [Dot Blot](#)
- [Immunohistochemistry](#)
- [Immunofluorescence](#)
- [Immunoprecipitation](#)
- [Flow Cytometry](#)
- [Cell Culture](#)

Anti-APOBEC3A Antibody - Images

Western blot analysis of APOBEC3A expression in Hela (A), HGC27 (B), mouse lung (C), mouse liver (D), rat liver (E) whole cell lysates.

Anti-APOBEC3A Antibody - Background

KLH-conjugated synthetic peptide encompassing a sequence within the center region of human APOBEC3A. The exact sequence is proprietary.