

**Anti-SENTP5 Antibody**  
**Rabbit polyclonal antibody to SENP5**  
**Catalog # AP59902****Specification**

---

**Anti-SENTP5 Antibody - Product Information**

Application	WB, IHC
Primary Accession	<a href="#">Q96HI0</a>
Reactivity	Human, Rat, Monkey, Pig, Bovine, Dog
Host	Rabbit
Clonality	Polyclonal
Calculated MW	86693

**Anti-SENTP5 Antibody - Additional Information****Gene ID** 205564**Other Names**

Sentrin-specific protease 5; Sentrin/SUMO-specific protease SENP5

**Target/Specificity**

KLH-conjugated synthetic peptide encompassing a sequence within the C-term region of human SENP5. The exact sequence is proprietary.

**Dilution**

WB~~WB (1/500 - 1/1000), IH (1/100 - 1/200)

IHC~~1:100~500

**Format**

Liquid in 0.42% Potassium phosphate, 0.87% Sodium chloride, pH 7.3, 30% glycerol, and 0.09% (W/V) sodium azide.

**Storage**

Store at -20 °C. Stable for 12 months from date of receipt

**Anti-SENTP5 Antibody - Protein Information****Name** SENP5**Function**

Protease that catalyzes two essential functions in the SUMO pathway: processing of full-length SUMO3 to its mature form and deconjugation of SUMO2 and SUMO3 from targeted proteins. Has weak proteolytic activity against full-length SUMO1 or SUMO1 conjugates. Required for cell division.

**Cellular Location**

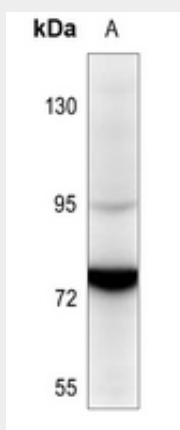
Nucleus, nucleolus

## Anti-SENP5 Antibody - Protocols

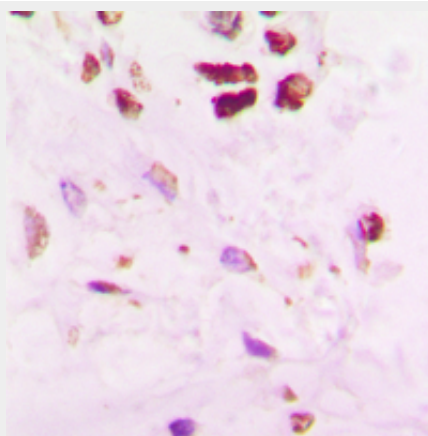
Provided below are standard protocols that you may find useful for product applications.

- [Western Blot](#)
- [Blocking Peptides](#)
- [Dot Blot](#)
- [Immunohistochemistry](#)
- [Immunofluorescence](#)
- [Immunoprecipitation](#)
- [Flow Cytometry](#)
- [Cell Culture](#)

## Anti-SENP5 Antibody - Images



Western blot analysis of SENP5 expression in Hela (A) whole cell lysates.



Immunohistochemical analysis of SENP5 staining in human lung cancer formalin fixed paraffin embedded tissue section. The section was pre-treated using heat mediated antigen retrieval with sodium citrate buffer (pH 6.0). The section was then incubated with the antibody at room temperature and detected using an HRP conjugated compact polymer system. DAB was used as the chromogen. The section was then counterstained with haematoxylin and mounted with DPX.

## Anti-SENP5 Antibody - Background

KLH-conjugated synthetic peptide encompassing a sequence within the C-term region of human SENP5. The exact sequence is proprietary.