

**Anti-IL-28A Antibody**  
Rabbit polyclonal antibody to IL-28A  
Catalog # AP59903

## Specification

---

### Anti-IL-28A Antibody - Product Information

Application	WB
Primary Accession	<a href="#">O8IZJ0</a>
Other Accession	<a href="#">O4VK74</a>
Reactivity	Human, Mouse, Rat
Host	Rabbit
Clonality	Polyclonal
Calculated MW	22288

### Anti-IL-28A Antibody - Additional Information

Gene ID 282616

#### Other Names

IL28A; ZCYTO20; Interferon lambda-2; IFN-lambda-2; Cytokine Zcyto20; Interleukin-28A; IL-28A

#### Target/Specificity

Recognizes endogenous levels of IL-28A protein.

#### Dilution

WB~~WB (1/500 - 1/1000)

#### Format

Liquid in 0.42% Potassium phosphate, 0.87% Sodium chloride, pH 7.3, 30% glycerol, and 0.09% (W/V) sodium azide.

#### Storage

Store at -20 °C. Stable for 12 months from date of receipt

### Anti-IL-28A Antibody - Protein Information

Name IFNL2

Synonyms IL28A, ZCYTO20

#### Function

Cytokine with antiviral, antitumour and immunomodulatory activities. Plays a critical role in the antiviral host defense, predominantly in the epithelial tissues. Acts as a ligand for the heterodimeric class II cytokine receptor composed of IL10RB and IFNLR1, and receptor engagement leads to the activation of the JAK/STAT signaling pathway resulting in the expression of IFN-stimulated genes (ISG), which mediate the antiviral state. Has a restricted receptor distribution and therefore restricted targets: is primarily active in epithelial cells and this cell type-selective action is because of the epithelial cell-specific expression of its receptor IFNLR1.

Seems not to be essential for early virus-activated host defense in vaginal infection, but plays an important role in Toll-like receptor (TLR)- induced antiviral defense. Plays a significant role in the antiviral immune defense in the intestinal epithelium. Exerts an immunomodulatory effect by up-regulating MHC class I antigen expression.

#### Cellular Location

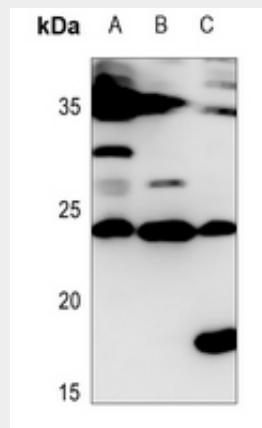
Secreted.

#### Anti-IL-28A Antibody - Protocols

Provided below are standard protocols that you may find useful for product applications.

- [Western Blot](#)
- [Blocking Peptides](#)
- [Dot Blot](#)
- [Immunohistochemistry](#)
- [Immunofluorescence](#)
- [Immunoprecipitation](#)
- [Flow Cytometry](#)
- [Cell Culture](#)

#### Anti-IL-28A Antibody - Images



Western blot analysis of IL-28A expression in mouse liver (A), rat testis (B), rat liver (C) whole cell lysates.

#### Anti-IL-28A Antibody - Background

KLH-conjugated synthetic peptide encompassing a sequence within the center region of human IL-28A. The exact sequence is proprietary.